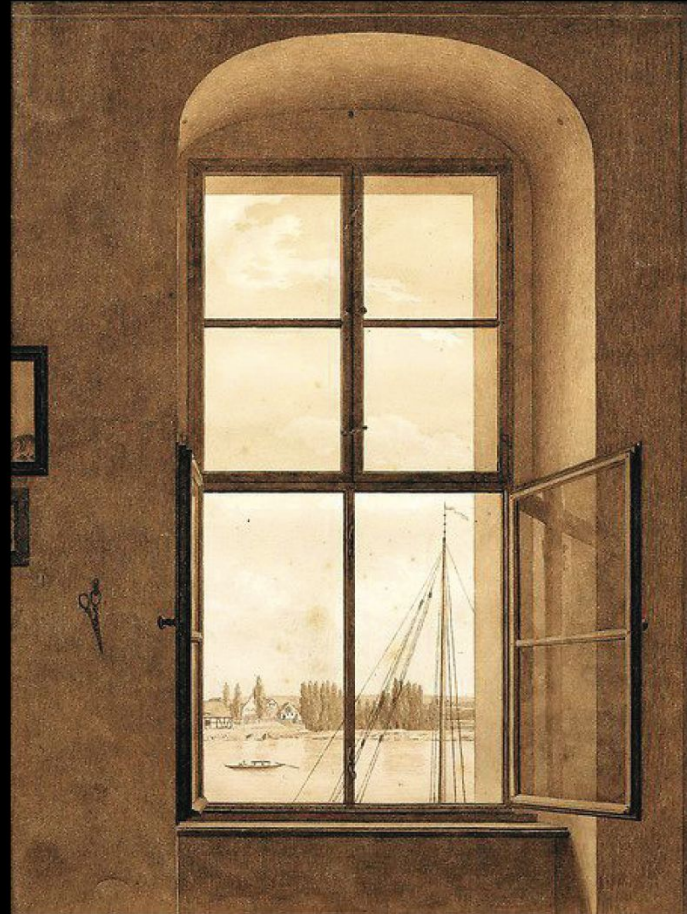
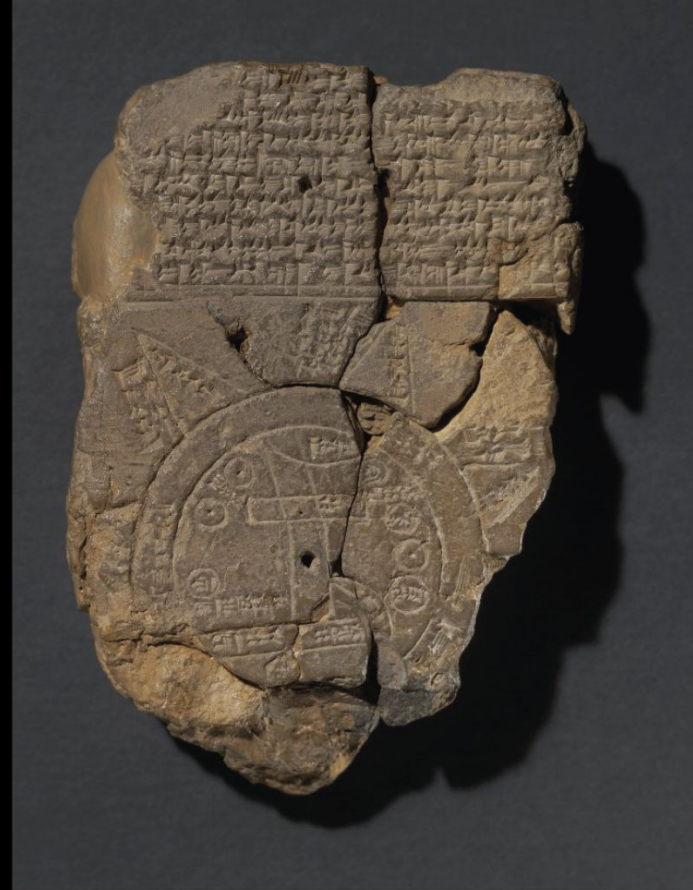


Caspar David Friedrich, *View from the
Artist's Studio—Window on the Right*, 1805-6.
312 x 237 mm . Graphite and sepia on paper
Belvedere, Vienna



Babylonia Map of the World. Neo-Babylonian; / early Achaemenid period. 600 BCE, British Museum, 122 x 82mm, clay.



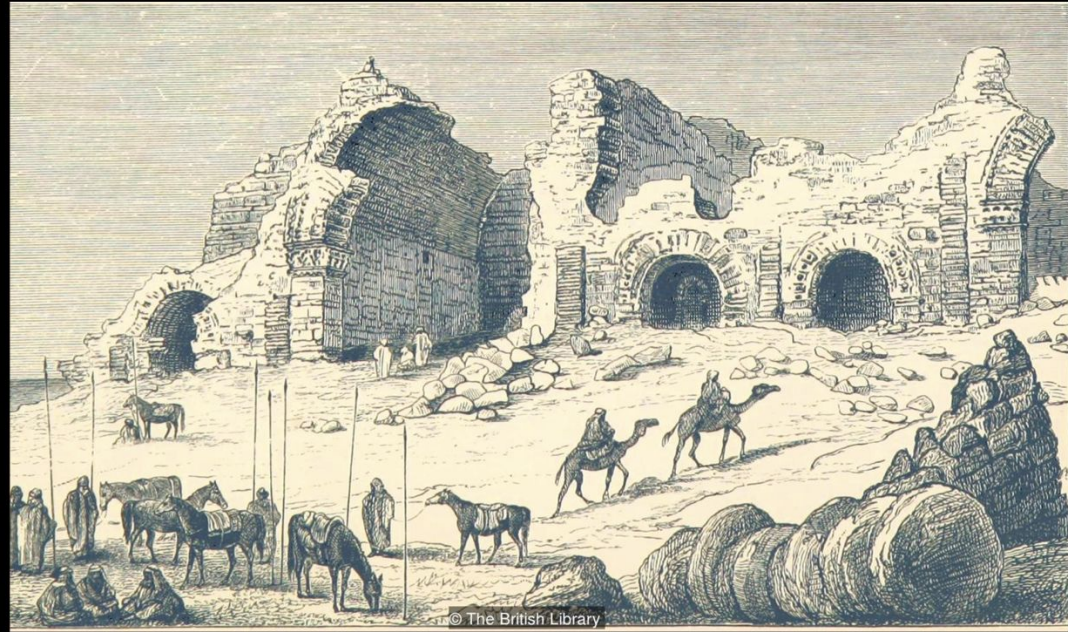
Pieter Bruegel the Elder. *The Tower of Babel.* 1563. Oil on wood panel, 114 x 1550 mm, Kunsthistorisches Museum Wien.



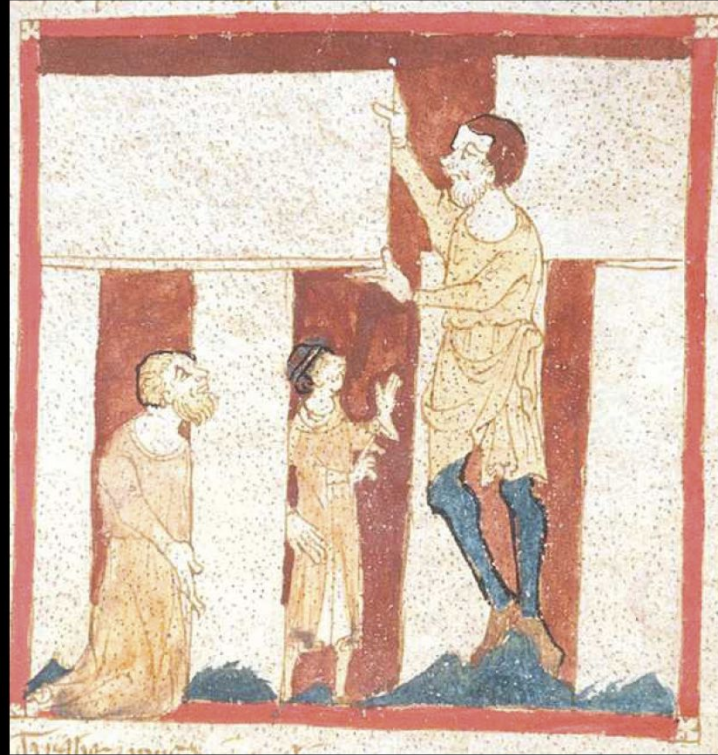
Anonymous. *The Destruction of Sodom,*
1320, Illuminated manuscript.
British Library, Add. MS. 27210, f.7.
London, England.



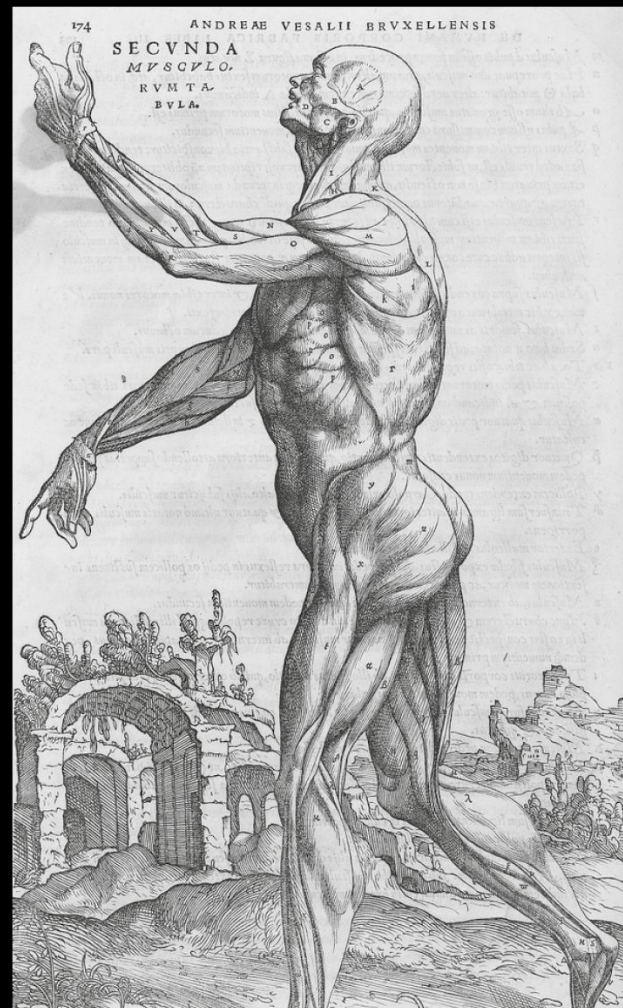
Anonymous. *Title Unknown.* Imru' al-Qais, an exiled poet-king, is credited as the originator of the 'ruin poetry' form - one of his poems is said to hang in the Kaaba at Mecca (Credit: The British Library)



Illuminated manuscript. *Giants help the young Merlin build Stonehenge in a manuscript of Wace's Roman de Brut c. 1325-1350. British Library, Add. MS. 27210, f.7. London, England.*



Andreas Vesalius (engraving Jan van Calcar), *De humani corporis fabrica*. 1543, Plate 26, Bijzondere collection University of Amsterdam. Publisher: Johann Oporinus (1536-1567)



Giovanni Paolo Panini. *Roman Capriccio: The Pantheon and Other Monuments.* 1735. 990 x 535 mm. Indianapolis Museum of Art, USA.





Giovanni Battista Piranesi. *Ancient intersection of the Via Appia and Via Ardeatina*, c. 1761, 640 x 400 mm. Metropolitan Museum of Art, NY.

Hubert Robert. *Imaginary View of the Grande Galerie in the Louvre in Ruins, 1796.*
1145 x 1460 mm, The Louvre, Paris.



Gustave Doré. *The New Zealander*, 1872.
Reproduction from *London: A Pilgrimage* by
Blanchard Jerrold (from "Harper's Weekly")
May 31, 1873.



