

# HA'AMO TAHA

Tongan Social Workers Network Aotearoa



2022 MIT/UNITEC Research Symposium

# Overview

- *Puipuitu'a: Why was Ha'amo taha established?*
- *Kamata'anga: How did Ha'amo Taha started?*
- *'Uhinga: Why the term Ha'amo Taha?*
- *Tefito'i mo'oni: Principles of Ha'amo Taha*
- *Founga: Ha'amo Taha Framework*
- *Tefito'i 'ilo: Philosophical underpinnings of Ha'amo Taha*
- *Visone: Ha'amo Taha Vision*
- *Taumu'a: Key Objectives*
- *Palani ki he kaha'u: Topics of interest from the Survey & Launch*



# Why was Ha'amo taha established?

- Recognised need
- There were unique qualities, experiences and life skills amongst Tongan practitioners
- Sharing best practices across the different fields of social work
- Vision providing a network to better support our kāinga Tonga especially Tongan social work practitioners, new graduates, students

# How Ha'amo Taha started?

- A working group was formed:
  - Anita Faau (Mental Health)
  - Dr 'Aulola Lino (Social Work Education)
  - Lesieli Pope (Health)
  - Michael Veukiso (Oranga Tamariki)
  - Osaiasi Kupu (Youth, Schools)
  - Viliami Tu'itupou (Housing)
- Meetings, planning days: Collaborative discussions
- Formulated the concept Ha'amo Taha and principles
- Developed philosophy, vision and key objectives

# Consultation



What is the meaning of Ha'amo  
Taha?



What are principles central to  
Tongan social work practice?



Is there a need for such  
network in the Tongan social  
work / community space

# Methodology

- **First Phase: Talanoa Method**
  - 1-1 Talanoa
  - Group Talanoa
- **Second Phase: Survey Monkey Questionnaire**
  - 18 Practitioners completed
- **Thematic Analysis**

# The concept 'Ha'amo Taha'?

- *Ha'amo* means to carry the *kavenga*/ load on the arm
- *Taha* refers to 'engaging in something together'



Working  
together



Empowering  
each other



Sharing  
burdens



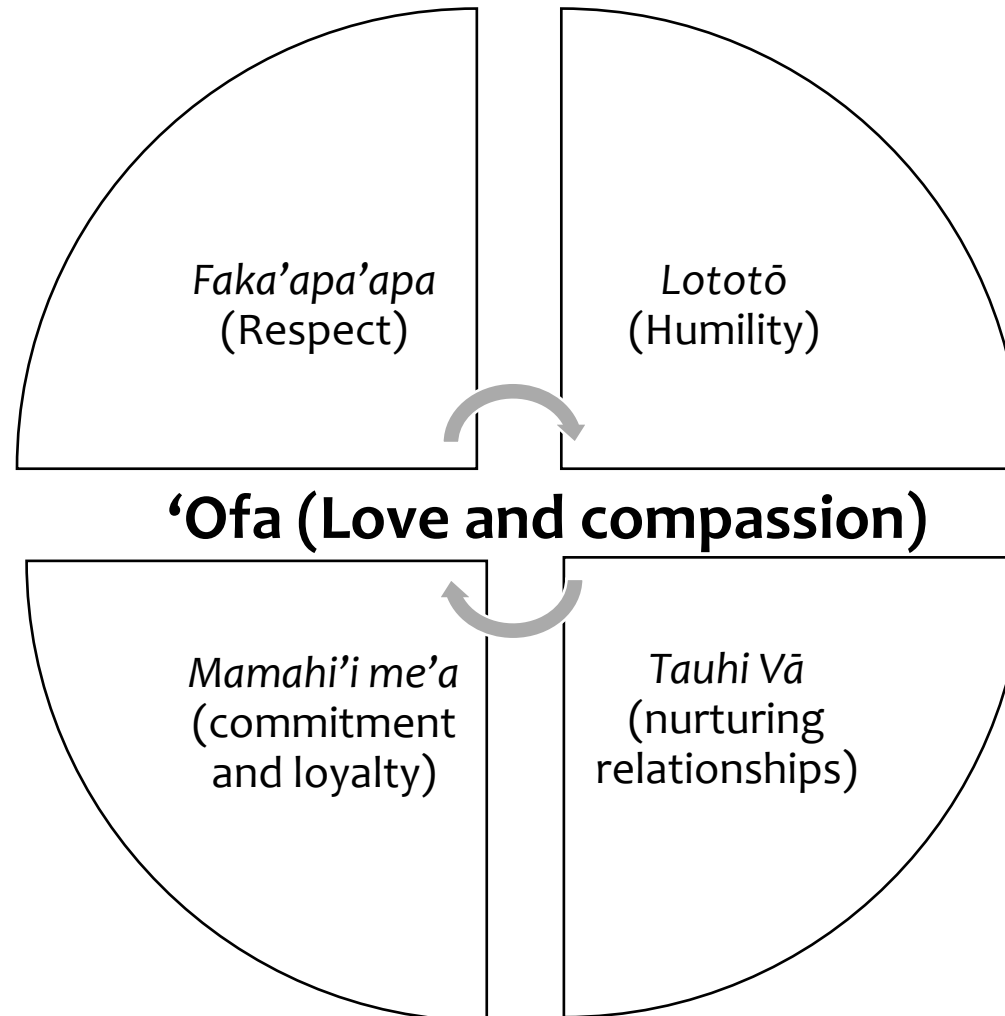
Visioning  
together



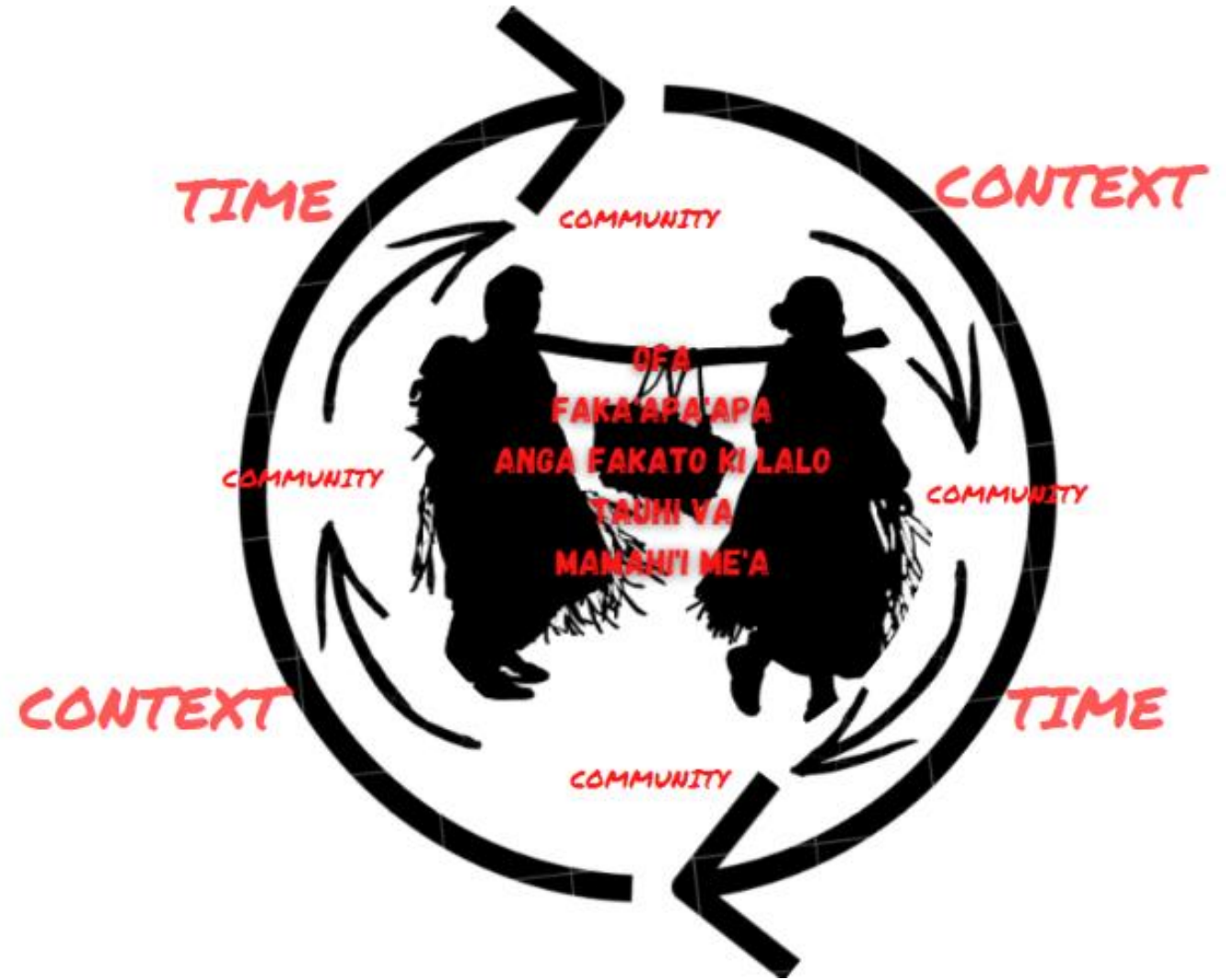
Positive  
outcomes



# Principles of Ha'amo Taha



# Ha'amo Taha Framework



# Philosophical underpinnings

*‘Oua te ke ta’ofi ha lelei meiate kinautolu ‘oku ‘ounautolu ia, ‘osi, ‘oku mafai ‘e ho nima ke fai  
(Palovepi 3: 27)*

*Do not withhold good from those to whom it’s due, when it is your power to act  
(Proverbs 3:27)*

506 veesi 2

*Ko ‘etau kavenga ia  
‘etau mafasia e,  
Ko e ‘ahi’ahi fata  
‘etau me’a kotoa pe.  
Ko e to’e ni mo ngala  
Ho’otautolu pē fo’ui,  
Ko e fie ha’amo taha  
‘a e mamafa he mo’ui*

*Oh, what peace we often forfeit  
Oh, what needless pain we bear  
All because we do not carry  
Everything to God in prayer*

# Ha'amo Taha Vision

Our vision is to ignite Tongan Social Workers to Collaborate (*Ngāue fakataha mo fetokoniaki*). Network and Share (*Fakafehokotaki'anga moe Fevahevahe'aki*) to grow positive change, better health and wellbeing for our Tongan community in Aotearoa.

# Key objectives:

- To support and mentor Tongan Social Workers working in Auckland/New Zealand
- Social Workers to share expertise in specific disciplines (Professional Development)
- To provide Social Work support on Tongan cultural issues to health organizations, the Government, Government Departments, Educational institutions, and any other organizations or persons
- To assist Tongan Social Work students studying in Social Work
- To create a safe space to share best practice



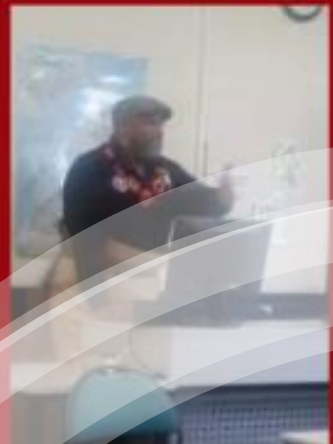
# HA'AMO TAHA LAUNCH



FRIDAY 7TH OCTOBER 2022

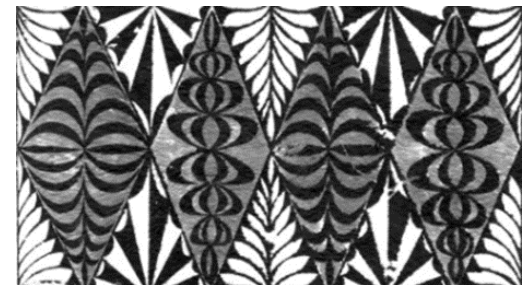
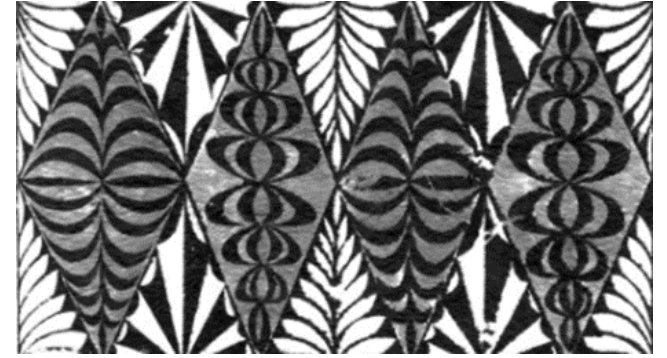
WITH KEYNOTE SPEAKER ASSOCIATE PROFESSOR TRACIE MAFILE'O





# Topics of interest from the survey & group from the launch

- ❑ Building Cultural Knowledge
- ❑ Networking and Connecting
- ❑ Enhance good practice in social work
- ❑ Family interventions





Where to from here...



Mālō ‘aupito  
– Tu’a ‘ofa atu