

Henry Kulka in Samoa
A Methodist Church in Apia

AAANZ Annual Conference 2023
Gold Coast, QLD

Christoph Schnoor

A few components of this puzzle

Henry Kulka, 'right hand' of Adolf Loos

A Jewish émigré architect in New Zealand

The Methodist Church in Samoa

Samoa governed by New Zealand administrations

Fletcher Construction, Auckland

Adolf Loos with Heinrich Kulka: Country House Khuner, Payerbach, Austria, 1929



Kulka in Auckland – working for Fletcher Construction from 1940 onwards



Rendells Store, Takapuna, Auckland, 1961



Kidd Garret Ltd, Hobson St, Auckland, 1955

<https://collection.fletcherarchives.co.nz/objects/56683/fletcher-construction-co-ltd-1961-rendells-store-takapuna-auckland>

<https://collection.fletcherarchives.co.nz/objects/56696/fletcher-construction-co-ltd-1955-kidd-garret-ltd-hobson-st-auckland-3-items-a-c>

Kulka in Auckland – having left Fletcher Construction in 1960, he designed mostly houses



Sharp House, Auckland, 1964
Henry Kulka in St. Heliers, 1970

Samoa
A fale tele under
construction



Te Papa Tongarewa C.001446
Photo by Thomas Andrew, c. 1900

A map of Apia



A map of the site: Ekelesia Metotisi Samoa Matafele



F H Beckett, Morris Hedstrom Offices in Apia,
Fletcher Construction's first accomplished job in Samoa



Morris Hedstrom Building, c. 1950

<https://collection.fletcherarchives.co.nz/objects/59587/fletcher-construction-co-south-pacific-division-circa-1949-western-samoa-morris-hedstrom-ltd>

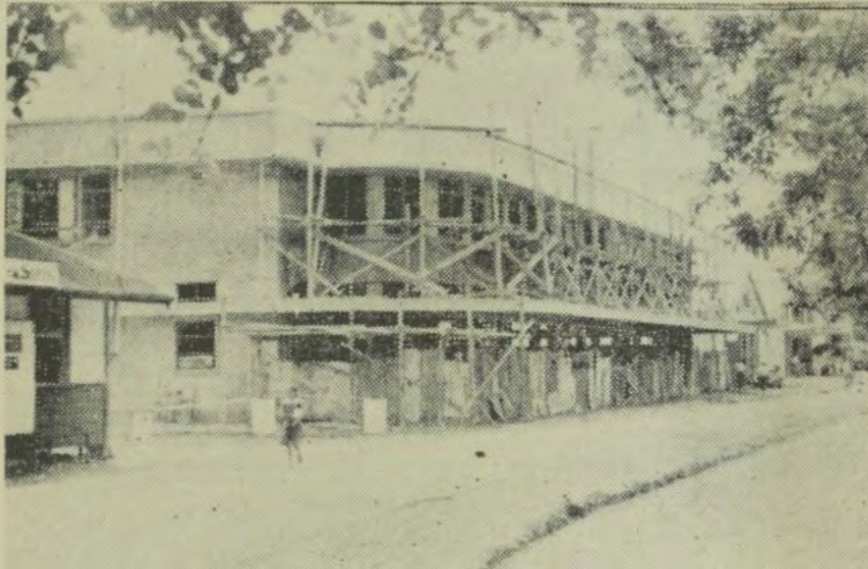
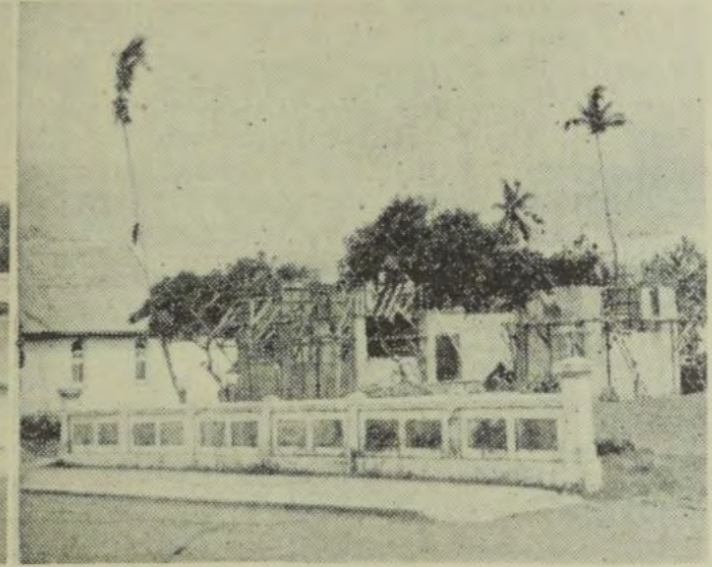
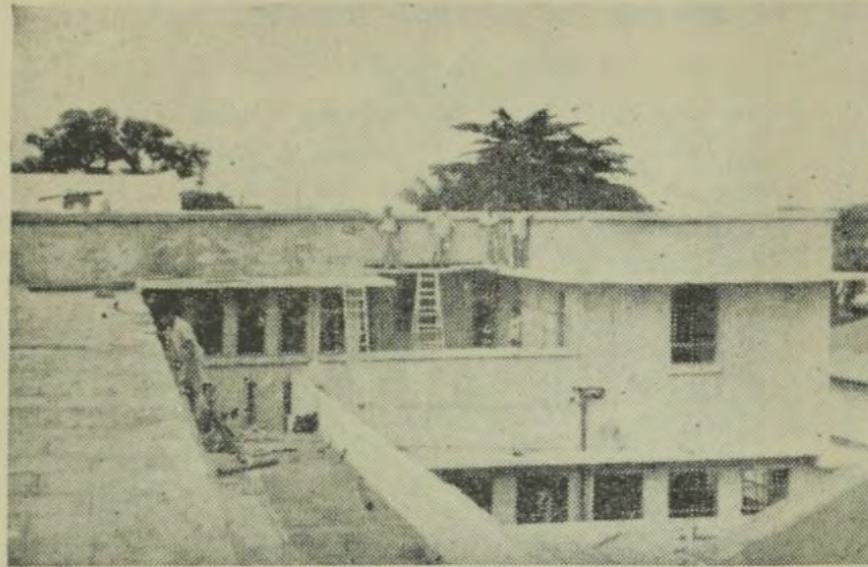


Morris Hedstrom offices
and Methodist Church
under construction in Apia
in 1950

Pacific Islands Monthly
Vol. XX, no. 7 (Feb. 1950)

<https://nla.gov.au/nla.obj-370006969/view?sectionId=nla.obj-372959082>

BUILDING ACTIVITY IN APIA



As reported elsewhere in this issue, Morris, Hedstrom, Ltd., are building a new modern store in the wharf area, Apia, W. Samoa. The two photographs on the left show the building in course of erection. A block of modern flats (shown top left) is incorporated in the building which is to cost £50,000. Work commenced in November, 1948. It is expected that it will be completed by May, 1950. At right is new Methodist Church at Matafele in course of erection. Its estimated cost is £40,000. Samoan Methodists are giving their labour free.

—Photos by Superflash, Apia.

The Methodist Church in Apia, Samoa

An attempt at an Italianate church?

Instead of trying to find a way to express Samoan architecture – in whatever way, Kulka makes a vague Italian connection.



A view from the Government Building (2015)

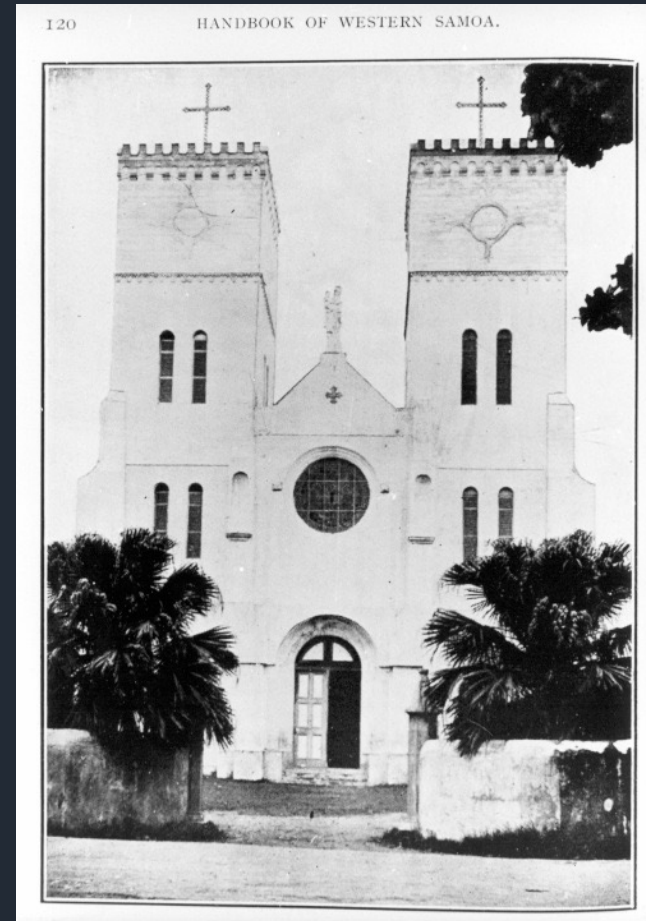


The Methodist Church in Matafele, Apia

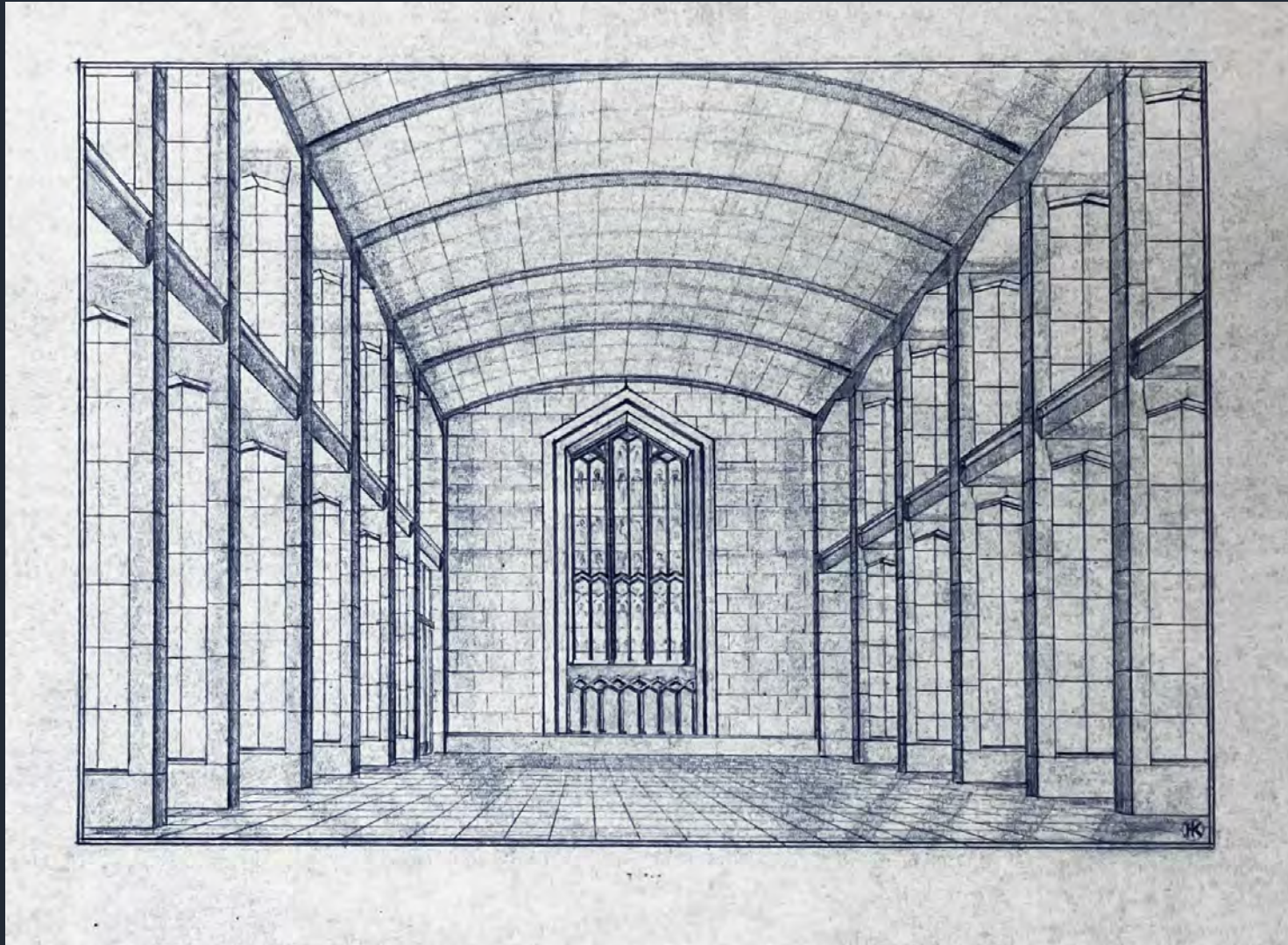
photographed by Thomas Andrew, c. 1910



Apia Catholic Cathedral of ca. 1890

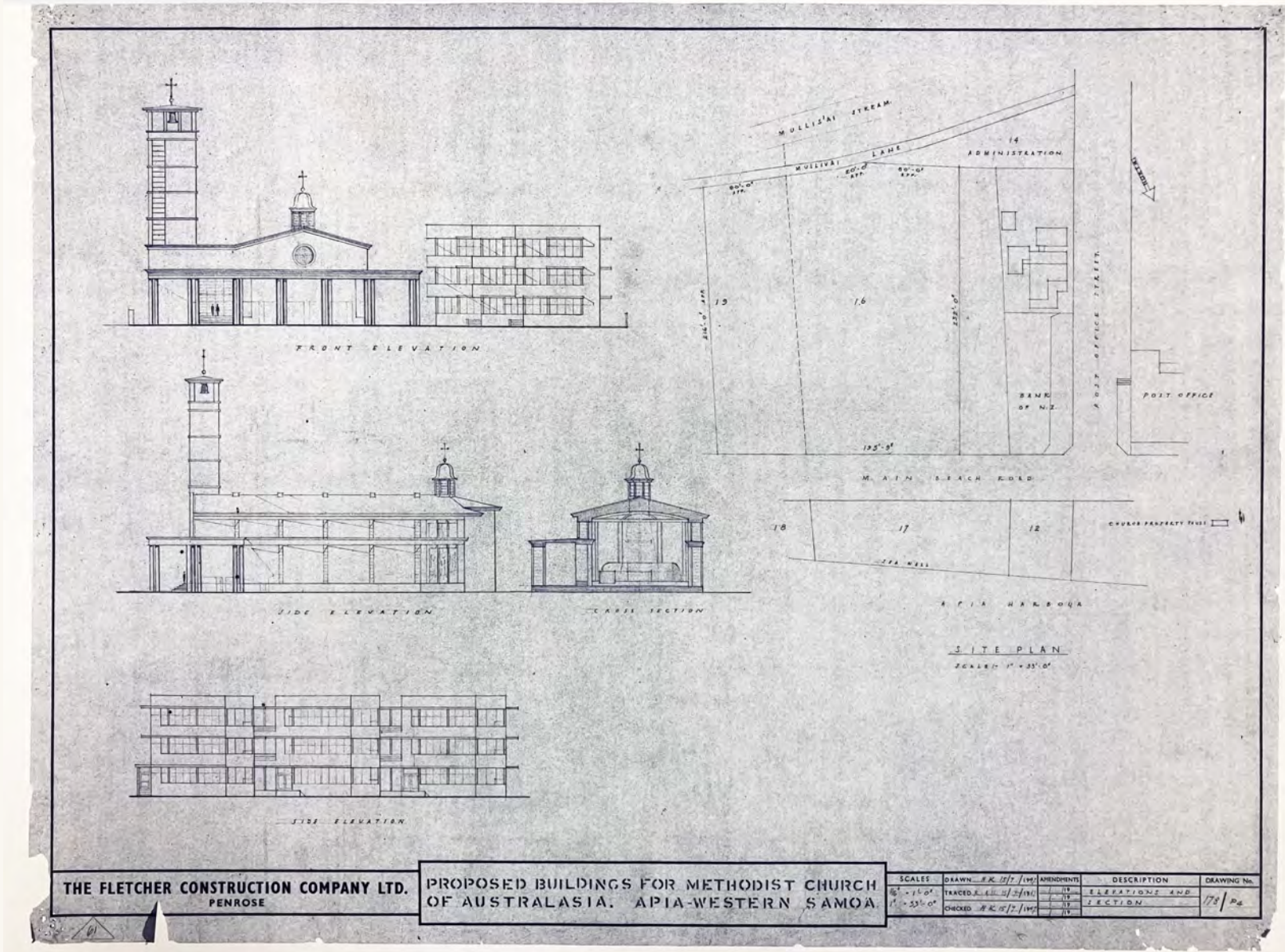


The Methodist Church in Apia, Samoa, designed by Henry Kulka (1947–1951)



Interior perspective: Fletcher Archives, Auckland

Drawing as of 15 July 1947



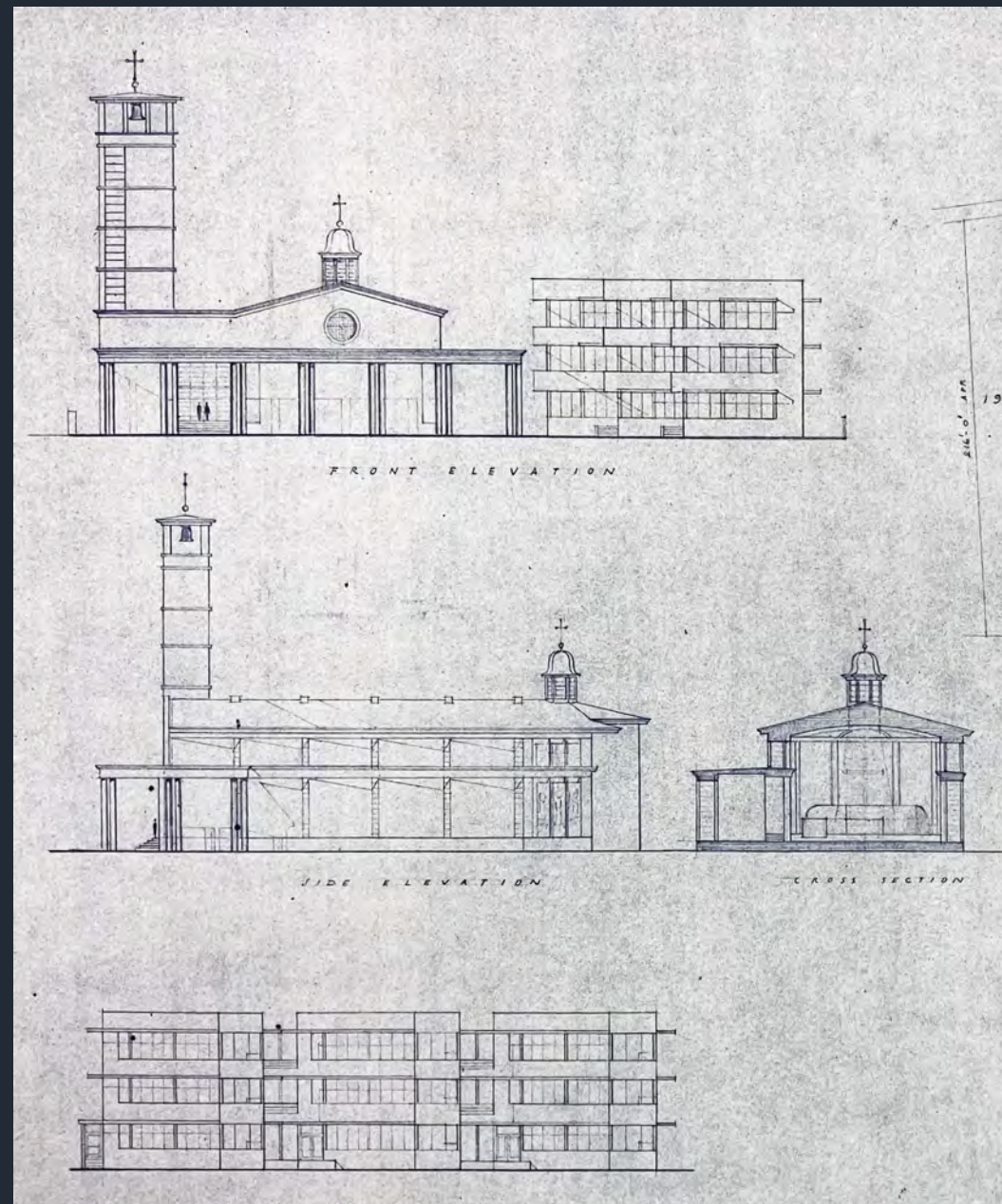
THE FLETCHER CONSTRUCTION COMPANY LTD.
PENROSE

PROPOSED BUILDINGS FOR METHODIST CHURCH
OF AUSTRALASIA. APIA-WESTERN SAMOA.

SCALES	DRAWN	TRACED	CHECKED	AMENDMENTS	DESCRIPTION	DRAWING No.
1" = 10'-0"	H.K. 15/7/47	R.A.U. 15/7/47	H.K. 15/7/47	11	ELEVATIONS AND SECTION	778 / P.C.
1" = 33'-0"				12		

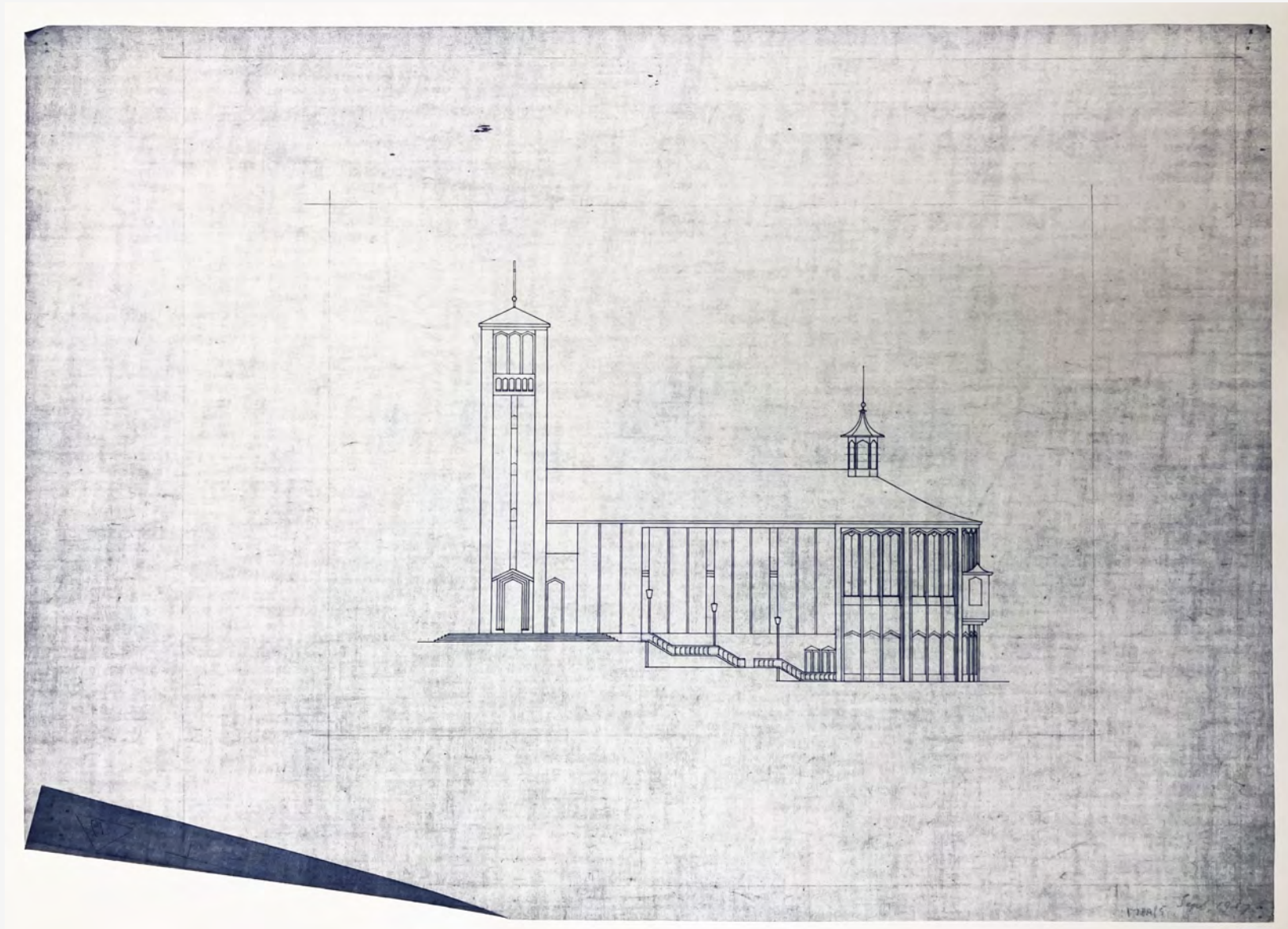
Drawn by Henry Kulka, traced by R.A.U., 15 July 1947. Fletcher Archives, Auckland

Interesting to note the modernist apartment building by the church's side



Drawn by Henry Kulka, traced by R.A.U., 15 July 1947. Fletcher Archives, Auckland

A second iteration: proposed elevation, stepping down towards the Mulivai Stream



Drawing by Henry Kulka, dated September 1947. Fletcher Archives, Auckland

Kulka's Methodist Church in Apia, Samoa
and August Stüler, St. Jacob's in Berlin, 1845



https://upload.wikimedia.org/wikipedia/commons/thumb/0/07/St-Jacobi-Kirche_Berlin.jpg/1024px-St-Jacobi-Kirche_Berlin.jpg



Albert Schaaffhausen (1876 – 1960), Anglican Church in Apia, Samoa (1945–1958)



Albert Schaaffhausen's Anglican Church in Apia, Samoa

...and Peter Behrens' Crematorium in Hagen, Germany, 1907.



Samoan-European blended buildings



Church in Malua, 1905



Vetle Jørgensen: Aiavao House, Moto'otua, Apia, 1970

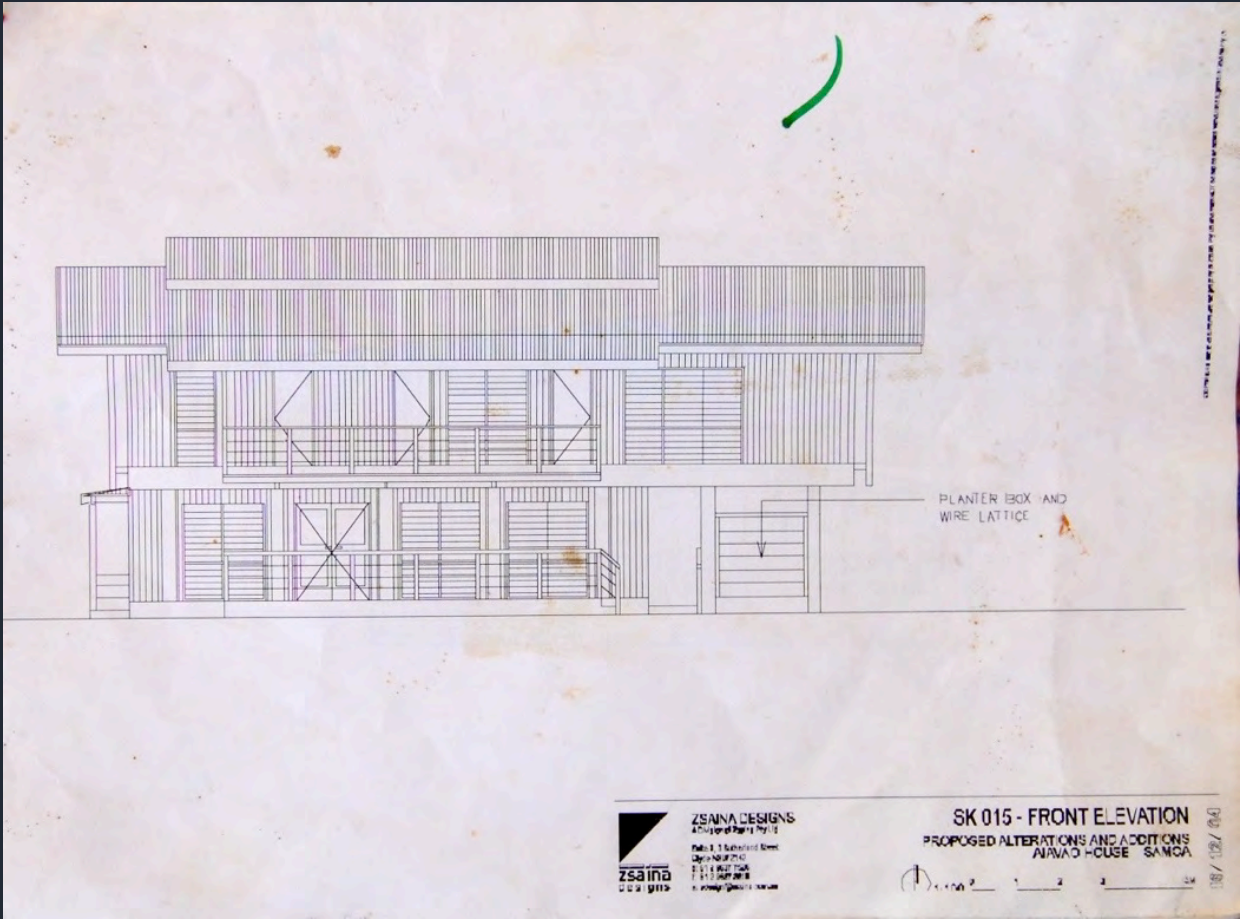
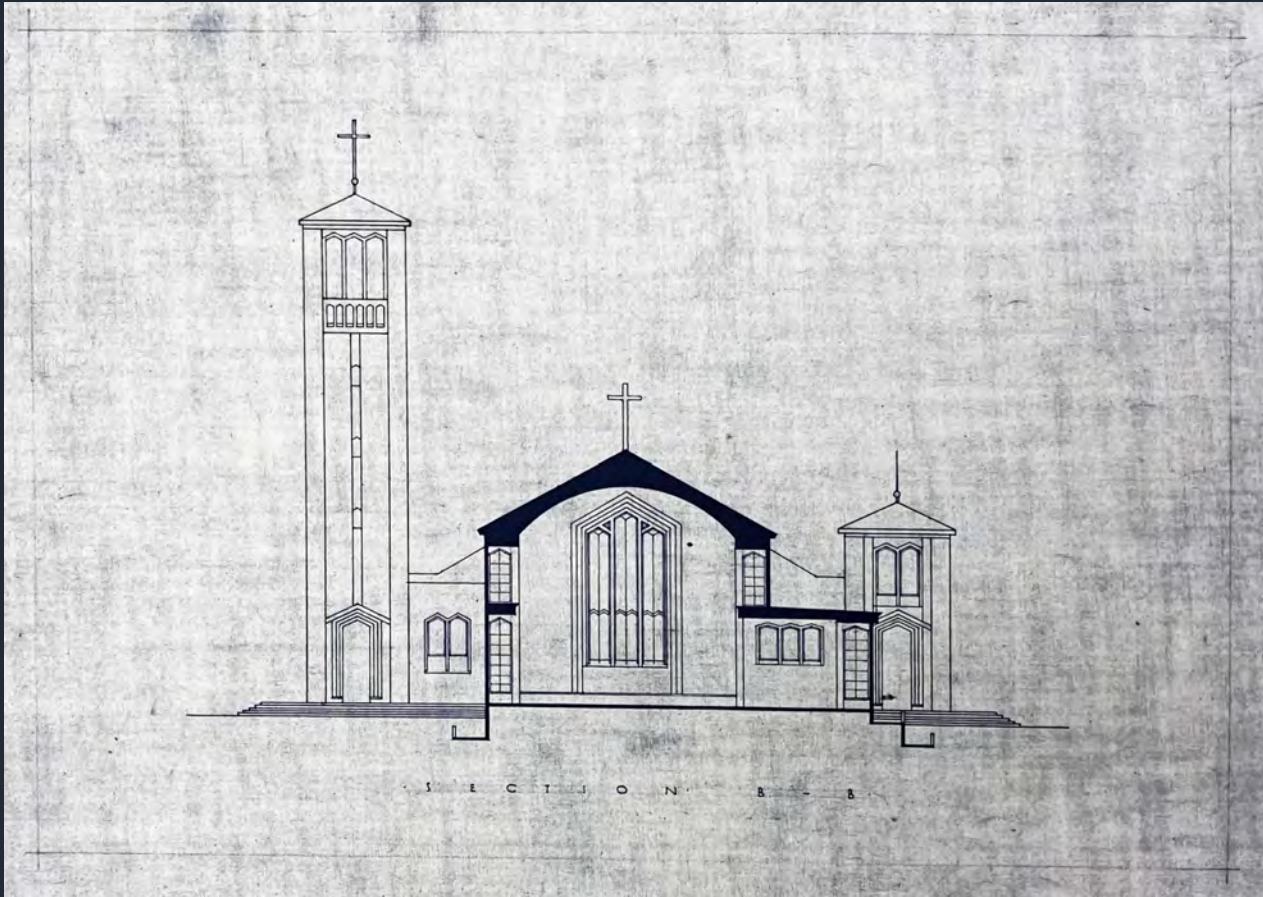


Photo: CS, 2015 / Drawing courtesy of Aiavao family

Zbginiew Marek Wolak: Maota fono in Mulinu'u, 1972



The Methodist Church in Apia, Samoa



A few components of this puzzle

Henry Kulka, 'right hand' of Adolf Loos –
actually a modernist?

A Jewish émigré architect in New Zealand –
did he ever visit Samoa?

The Methodist Church in Samoa –
did they ask for the church to be in a particular style?

Samoa governed by New Zealand administrations

Fletcher Construction, Auckland

Why was there no architectural reaction to 'place'?

Thank you!