

Notions of Therapy :

Unitec Campus History



Penny Cliffin
pcliffin@unitec.ac.nz

THE ISTHMUS OF AUCKLAND
with its extinct Volcanoes,
by
D.F. Ferdinand von Hochstetter
1859.

The Drawing & geographical Foundation compiled principally from the Surveys of Stokes & Drury by A. Petermann.

Scale 1:120,000.
German geogr. Mile (3.7)
Engl. Mile (69.1) = 1
Heights in Engl. Feet.
Soundings in Fathoms.
Lava streams.

Long. E. 172° 30' of Paris
Long. E. 174° 50' of Greenwich

Legend:

- Stratified Volcanic Tuff and Breccias, with numerous Craters
- Savaria's Cones marking Craters or Centres of Eruption.
- Basaltic Lava streams.
- Tertiary Clay, Mort and Sandstone.
- Quaternary Lignitiferous with plastic Clay and Sandstone.
- Lignite.
- Swamps.

A Walker del.
GOTHA JUSTUS PERTHES
1865.

Volcanic rock
at South of
campus.



A photograph of a grassy area with a large, irregular patch of light-colored, sandy soil in the center. The soil is mostly devoid of grass, with some small green weeds and grass tufts scattered across it. The surrounding grass is green and appears to be a mix of different species. The overall scene is outdoors, likely along a road or in a field.

Sedimentary clay soil along Carrington Rd



Wairaka Spring

The long drinking spring waters of Wairaka

This is a waahi tapu, an historic place which marks its occupation by Wairaka, of the Mataatua canoe who lived here around 950AD. When she was thirsty, she demanded water, stamped her foot, whence water gushed out of the ground.





Carving representing Wairaka on left side of Te Noho Kotahitanga Marae wharenui lintel

Purchased by
the Crown
from Ngati
Whatua in
1848

NZ Archives

Attach to 1374

28744

REDUCED PLANS
SCALES REDUCED ACCORDINGLY
SCALE OF INCHES

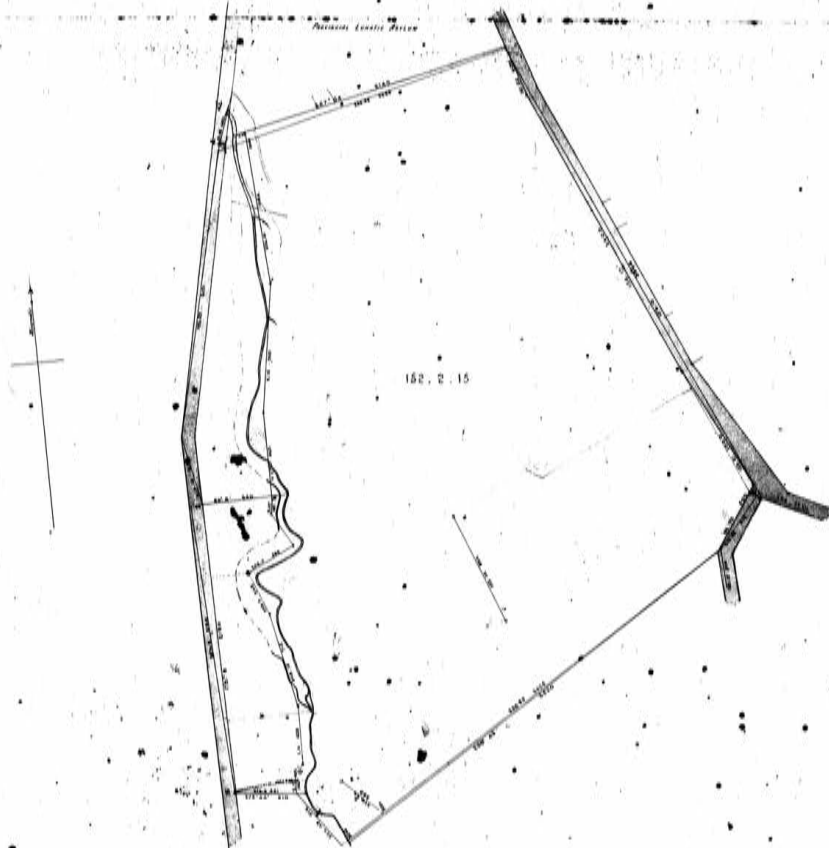
MAP OF FARM

SECTIONS N^o 51, 52 & 53

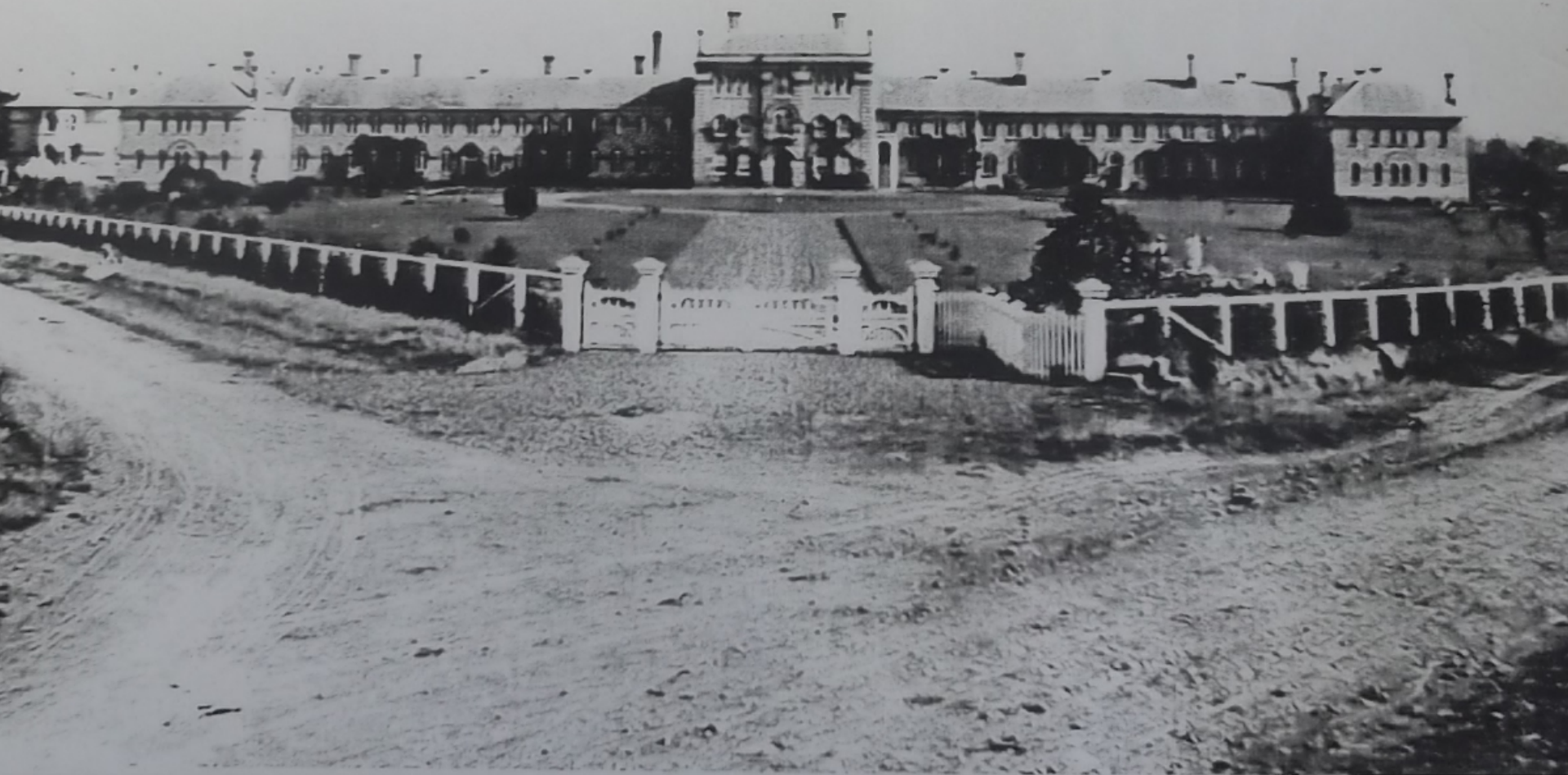
PARISH OF TITIRANGI

Scale 4 Chains to One Inch

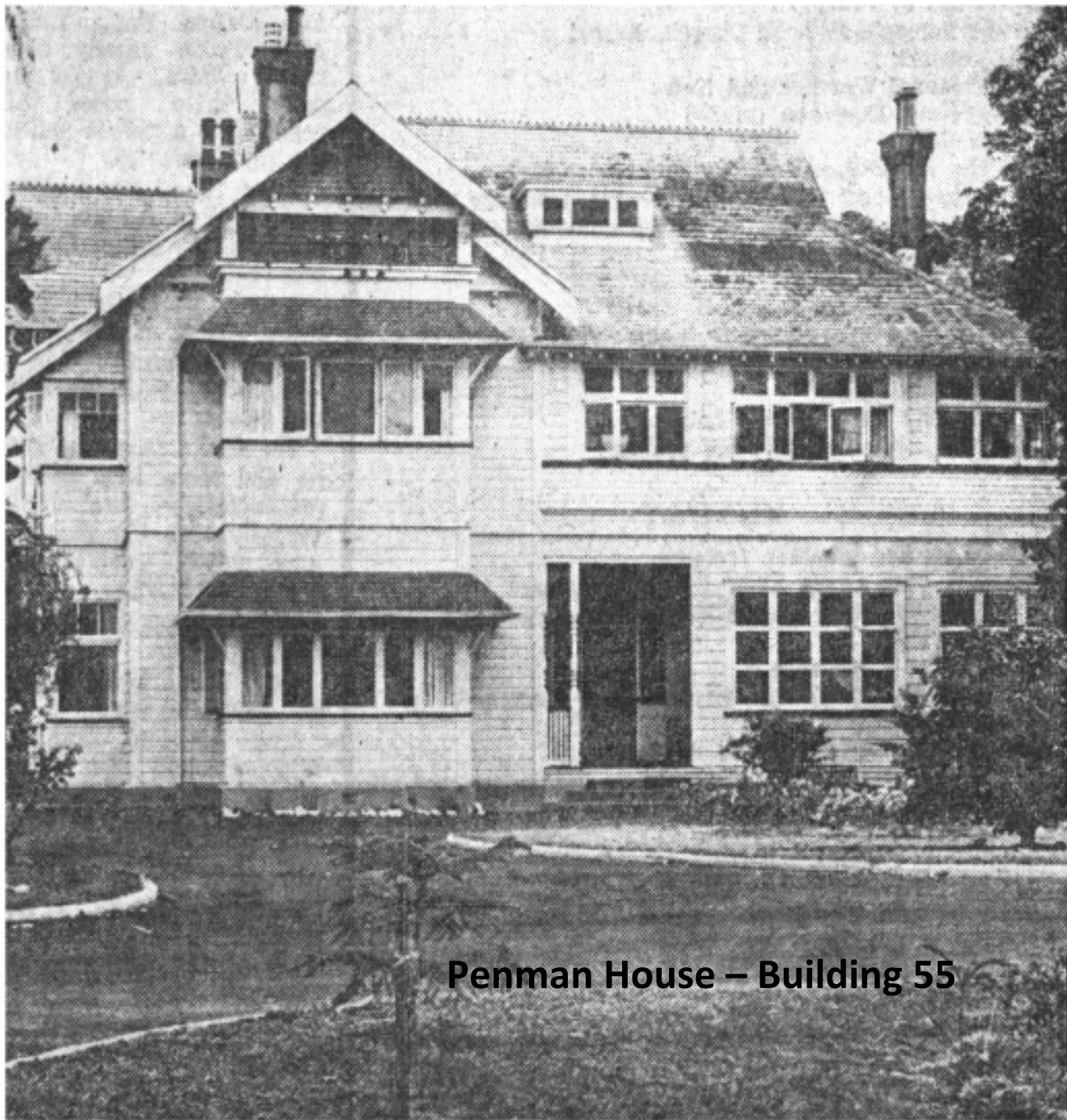
The River Burnett, its branches, & tributaries



1374-1



Carrington Hospital building from the north entrance ca.1895, *Auckland Institute and Museum*, neg C211



Penman House – Building 55

Carrington
Polytechnic
opened 1976



Central Leader

Carrington close

Carrington Hospital will close on July 15 and the Auckland Area Health Board hopes to sell it this financial year.

Forty-eight staff were laid off on Tuesday and 30 psychiatric nurses accepted voluntary redundancy.

Once the historic building (pictured right) is empty, area health board district commissioner Gary Taylor says, it will be sold.

Some parties are already interested but he would not say how many or what nationality they are.

He would give no details, saying they are commercially sensitive.

He says the Ngati Whatua will be consulted over the sale and money from it will go back into mental health services.

Public Service Association spokesperson Marlene Ainsworth says some of the nurses would have stayed on

for the last two weeks but the union and management agreed they could leave early to ensure their redundancy money was not taxed.

New redundancy laws are being considered by a parliamentary select committee.

Only 35 beds are still being used at Carrington and they will be moved to a new 60-bed acute unit at Auckland Hospital.

Meantime, staff from this new unit are looking after Carrington patients with the help of Kingsseat staff.

Although the main building at Carrington is closing, three others housing Maori mental health and forensic services will stay on site.

Carrington Hospital was built in 1867 and, in its heyday during the early 1970s, housed about 1200 patients.



WHAT'S ON: Weekend variety of music

REAL VALUE: Packed heaps of bargains

DRIVE TIMES: Looking for a change of vehicle?

SPORT: So near — but not so, far

A Suburban News Audited free circula



Remnant stone walls from the farm



Pine and cypress shelter belts



Gnarly old row of
seedling oaks.

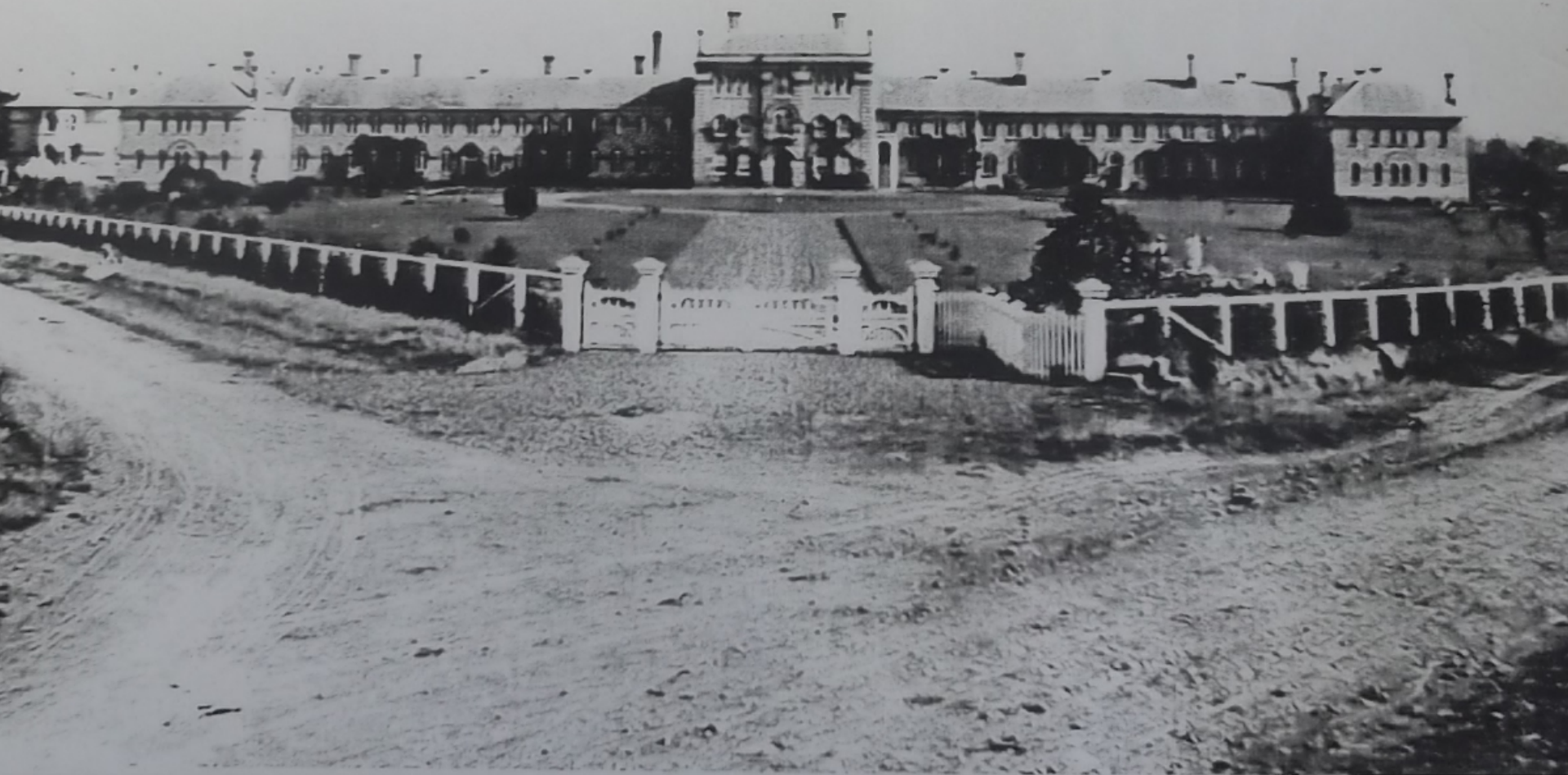
Drinking trough



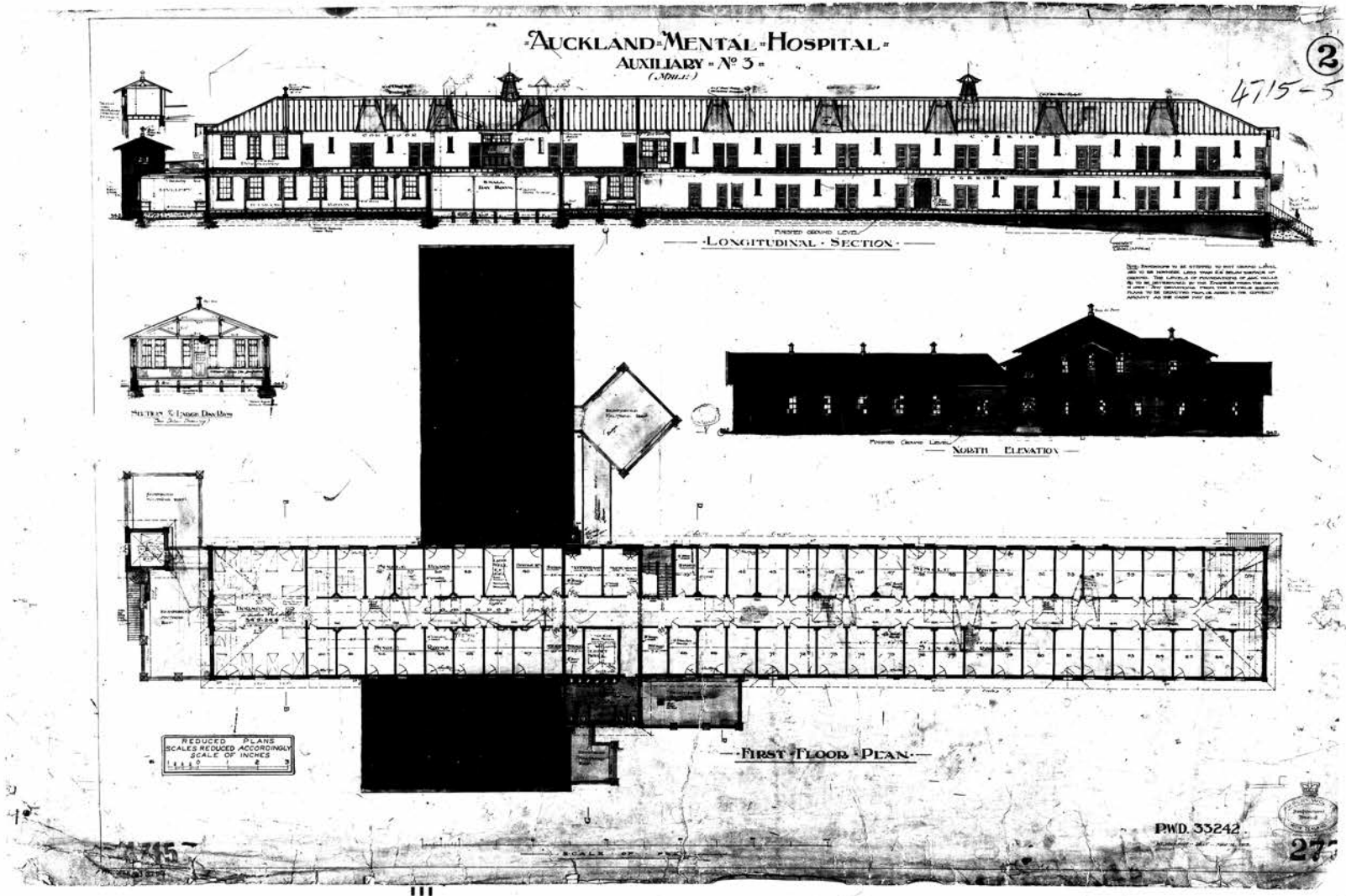




19th Century Ideas of Therapy



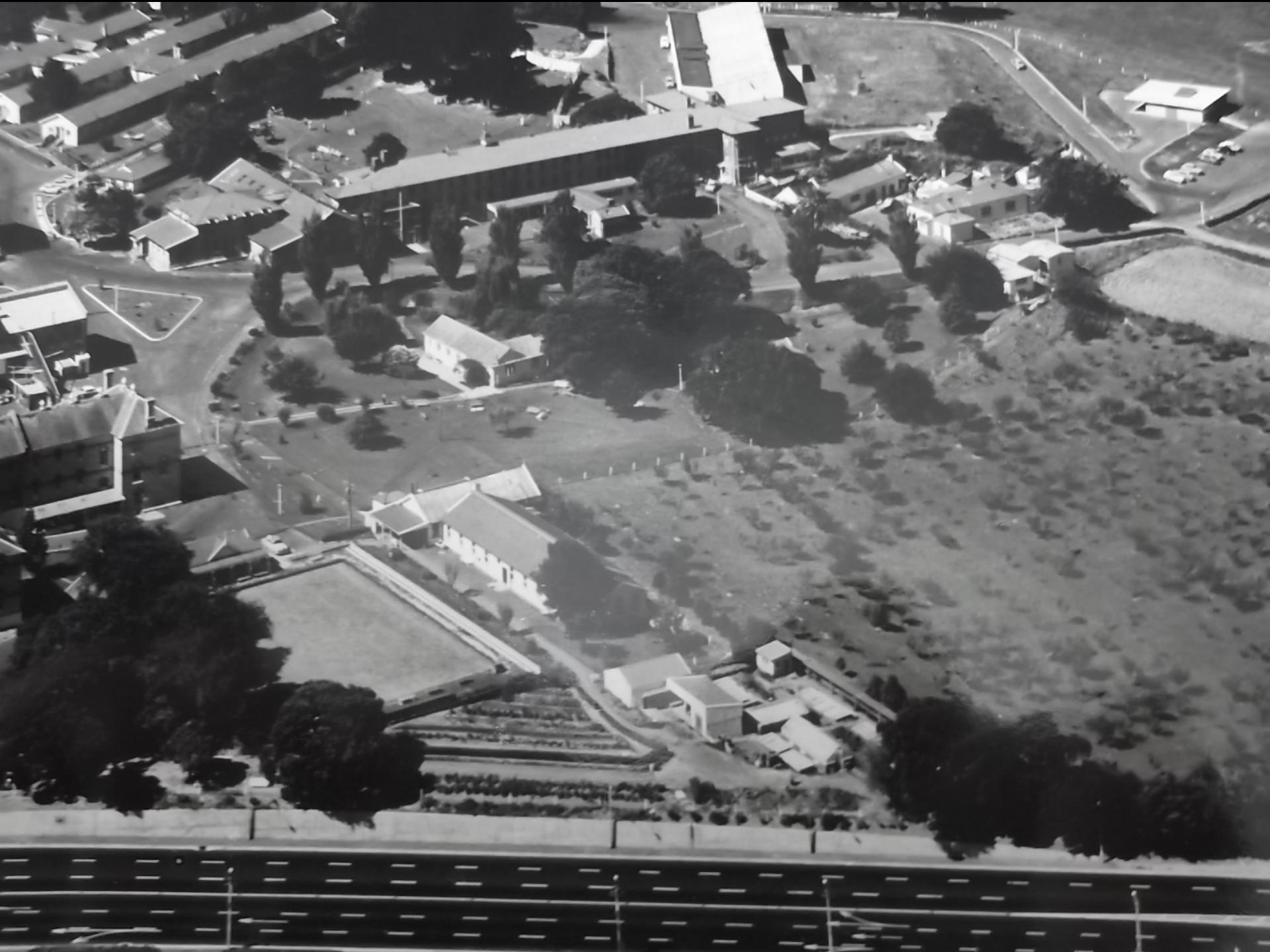
Carrington Hospital building from the north entrance ca.1895, *Auckland Institute and Museum*, neg C211



Building 6 plan section and north elevation

Aerial view from the North. Archives New Zealand 1966 - File Sheet. BBAD 154
Box 3071 b 13/3/6 Hospitals, Reserves and Domains – Oakley Hospital.







Aerial view of central campus. Archives New Zealand 1966 - File Sheet. BBA
154 Box 3071 b 13/3/6 Hospitals Reserves and Domains – Oakley Hospital



Aerial view of south end of campus 1966. Archives New Zealand - File Sheet. BBAD 154 Box 3071 b 13/3/6 Hospitals,



Bowling Green SW of Building One. Archives NZ - File Sheet. BBAD 154 Box 3071 b 13/3/6 Hospitals, Reserves and Domains – Oakley Hospital (Wellington, 1930-1966).

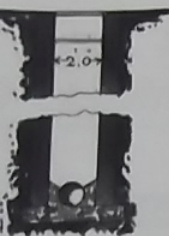
TAILS OF DISCONNECTING PIT

1/4 Scale

AUCKLAND LUNATIC ASYLUM.

PROPOSED IMPROVEMENTS & ADDITIONS

Scale: 32 FEET TO AN INCH.

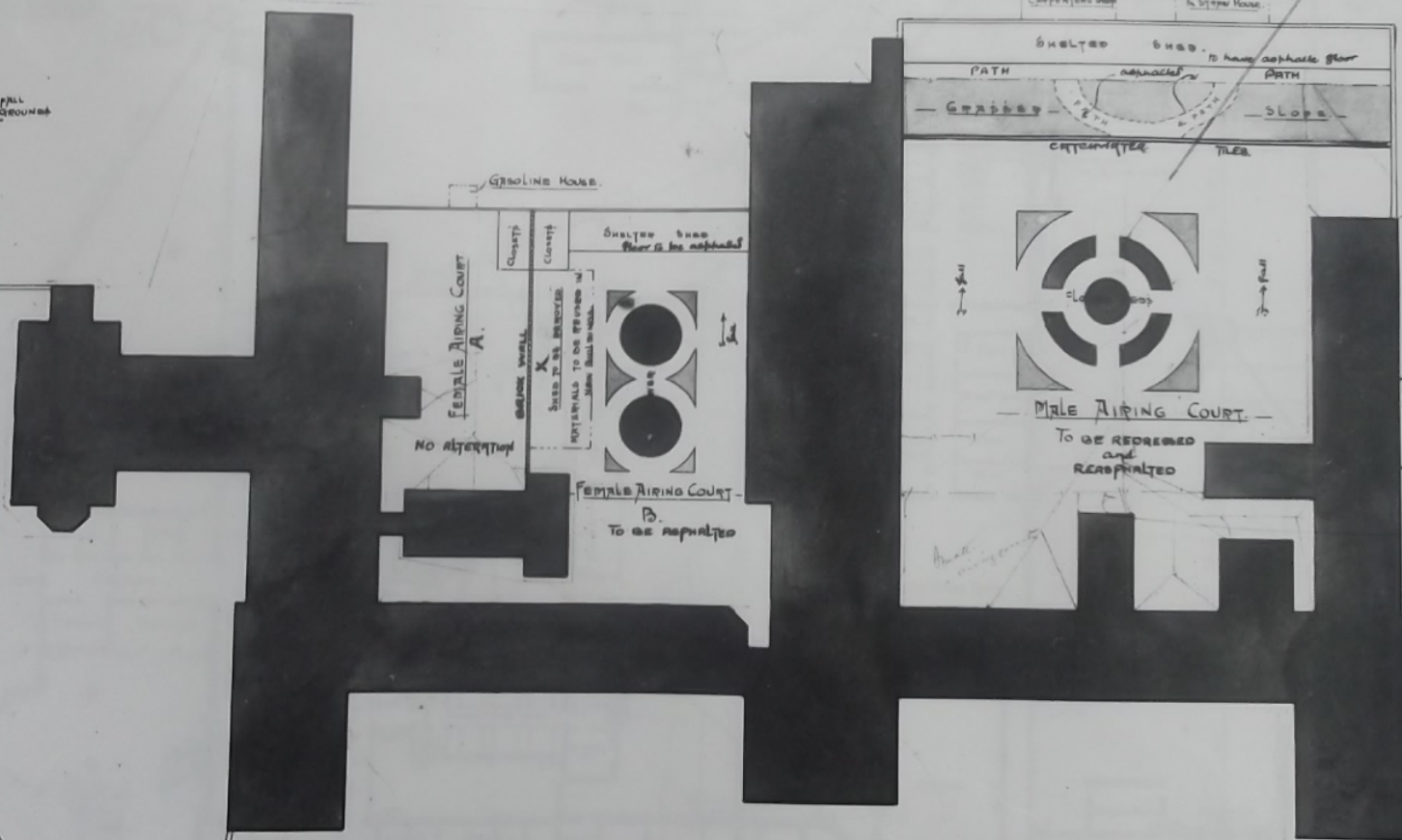


CROSS SECTION



MAIN DRAIN THROUGH GROUND

GATE



* THESE BUILDING
INDICATED, THE
ERECT THEM AS

Male and Female Airing Courts



The Female Airing Court today with weeping elm



Mixed native and exotic amenity trees near Building 48

We're not a park, says Unitec boss

5:00 AM Tuesday Jun 24, 2014

Locals love open space on campus and object to intensive development plans.



The Unitec campus is regarded by people in the community as a public park, complains Unitec chief executive Rick Ede.

It is regarded by people in the community as a public park, complains Unitec chief executive Rick Ede, heading back to his office from a stroll around Mt Albert campus.

"We're happy for them to make use of the campus and find better ways to do that.

"It's not our core business to be a park. We're an education provider," he emphasises, returning to the Academic Service Centre, otherwise known as Building 48, which Unitec says was once a male ward "for less dangerous patients".





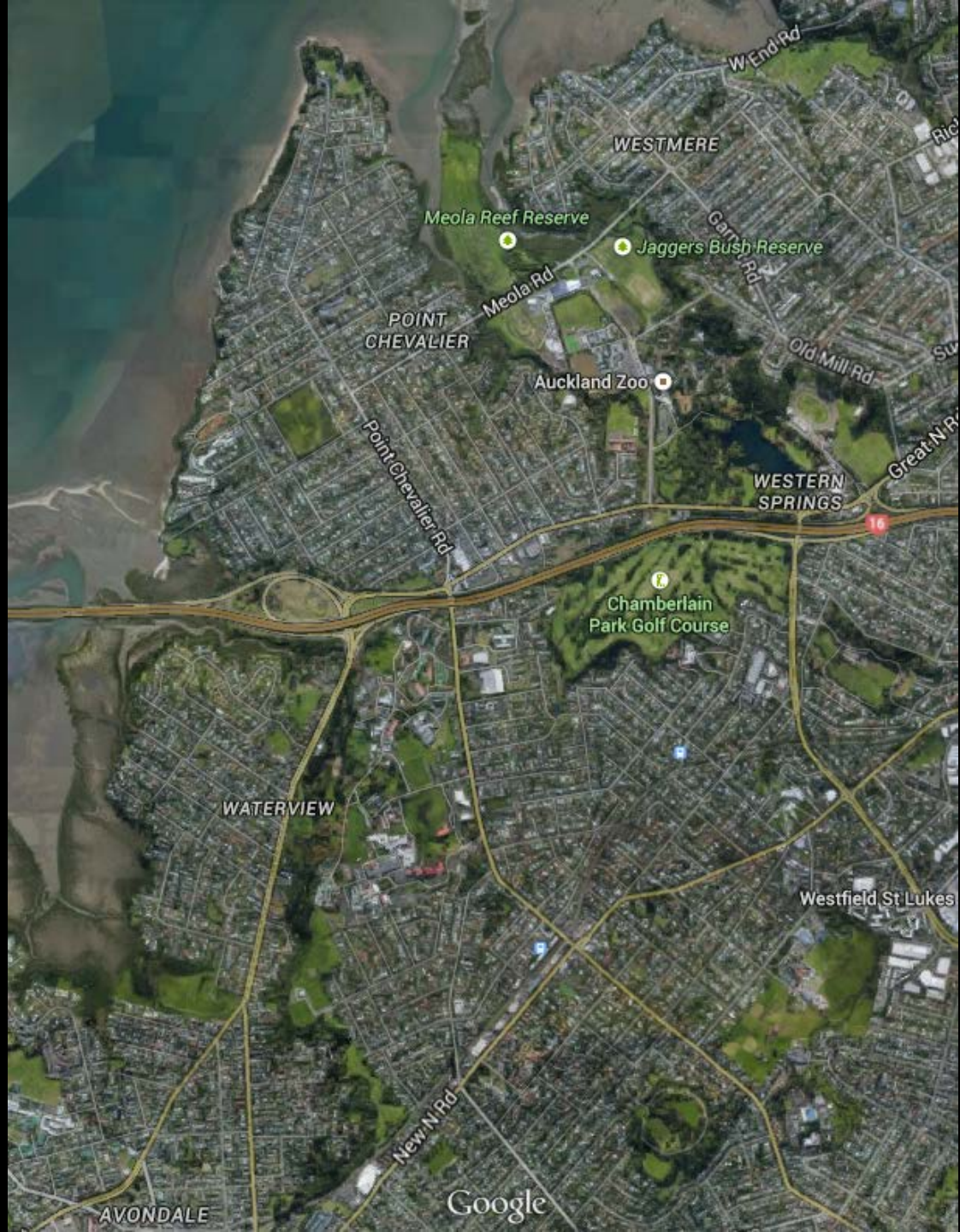
Unitec Context map –
green networks of open
space, habitat, water
management and access

Meola reef, zoo, parks,
MOTAT, golf course

Unitec campus

Oakley creek

Volcanic cone
– Owairaka Reserve







Wetland ponds - Unitec
- filter run off from paving and parking areas.



Native plantings -
amongst older exotics



Revegetation of riparian zones

Community
Gardens
- on ex-Horticulture
department
vegetable
production site.



Flax plantings in association with Te Noho Kotahitanga Marae



Unitec Arboretum Project



Heritage trees associated with
original hospital buildings



Botanically rare specimens
eg. *Castanopsis cuspidata* – Japanese tan oak



Castanopsis cuspidata – Japanese tan oak

The largest specimen of *Jacaranda mimosafolia* in Auckland





Memorial plantings for staff





The suffrage garden



Jelly palms – recent plantings at the vet hospital



Native tree planting around the IBM centre



Cupressus 'Swanes Gold' Entry 1 avenue

Fruit trees



Arboretum Project stages:

- Documentation
- Labeling
- Website development
- Planning future planting projects – community engagement

Documentation

Student class project to expand the data stored about the trees & add photographs – half the campus covered 2011, another quarter in 2012

Research assistant now rationalising the inputs.

>>DE

Liquidambar styraciflua (tree #2092)

Botanical Name	Liquidambar styraciflua
Common Name	American Sweet Gum
Family Name	Hamamelidaceae
Country of Origin	United States
Height (m)	12.0
Drip line Radius (m)	8.0
Near Building	001
Map Ref	A7
Latitude	-36.8719
Longitude	174.7095
Ground RL (m)	27.00
Location Description	Front of Building 001 by north boundary next to cycleway and seating area
Age Remarks	
Historical Remarks	
Other Remarks	Large deciduous pyramidal tree; rugged corky bark; dark green maple-like leaves turn red, orange, yellow and purple in autumn
Tree labelling	Recommended
Tree last maintained	
Data last updated	31 May 2011 13:44
Last updated by	Vicky Williams



Photo 1 (should be in landscape format)



Photo 2 (in either portrait or landscape format)

Labelling for 100 top trees – with QR code





List of Trees by Botanical Name

- Jacaranda mimosifolia
- Acer negundo
- Acer palmatum
- Acer palmatum dissectum atropurpureum
- Acer pseudoplatanus
- Acer pseudoplatanus 'Purpureum'
- Acer saccharinum
- Ackama rosifolia
- Acmena smithii
- Aesculus hippocastanum
- Aesculus turbinata
- Afrocarpus gracilior
- Agathis australis
- Agathis robusta
- Agonis flexuosa
- Albizia julibrissin
- Alectryon excelsus
- Aloe aristata
- Araucaria columnaris

Welcome

This website is being developed to provide information and research about the trees on the Unitec Mt Albert campus.



Find us on Facebook



Unitec Arboretum

Like You like this.



Unitec Arboretum

who lives on campus? (8 photos)

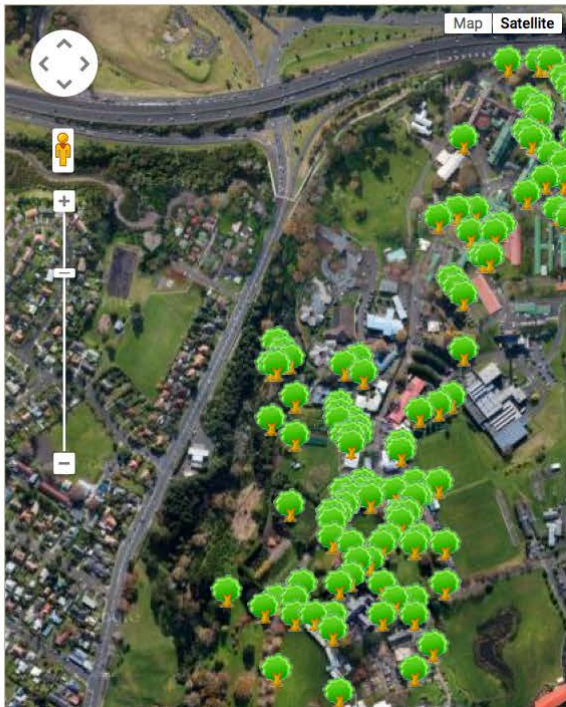
July 25 at 5:25pm



Arboretum Project



ARBORETUM PROJECT | SELF GUIDED WALK | CAMPUS FEATURES | GALLERY | VIDEO | LINKS | CONTACT US



List of Trees by Botanical Name

Jacaranda mimosifolia
Acer negundo
Acer palmatum
Acer palmatum dissectum atropurpureum
Acer pseudoplatanus
Acer pseudoplatanus 'Purpureum'
Acer saccharinum
Ackama rosifolia
Acmena smithii
Aesculus hippocastanum
Aesculus turbinata
Afrocarpus gracilior

Welcome

This website is being developed to provide information and research about the trees on the Unitec Mt Albert campus.

Welcome



Find us on Facebook



Unitec Arboretum

Like You like this.

Community engagement

Promoting the campus interest points, trees and activities, and planning new plantings eg. fruit trees, riparian plantings, spring blossom and trees for birds etc. Discussions with Friends of Oakley Creek to discuss synergies.

Self Guided Tree Walk

1. *Duranta erecta*, sky flower
2. *Vitex lucens*, puriri
3. *Jacaranda mimosifolia*, jacaranda
4. *Magnolia x brooklynensis* 'Yellow bird', magnolia
5. *Liquidambar styraciflua*, American sweetgum
6. *Melia azedarach*, Indian lilac
7. *Vitex lucens*, puriri
8. *Ulmus glabra* 'Pendula', weeping elm
9. *Sophora tetraptera*, kowhai
10. *Callistemon citrinus* 'Australora Firebrand', bottle brush
11. *Cupressus arizonica*, Arizona cypress
12. *Cedrus deodara*, Indian cedar
13. *Robinia pseudoacacia* 'Frisia', black locust
14. *Quercus palustris*, pin oak
15. *Liquidambar formosana*, formosan sweet gum
16. *Melia azedarach*, Indian bead tree
17. *Cupressus sempervirens* 'Swaine's Gold', golden upright cypress
18. *Acmena smithii*, lily pilli
19. *Liliodendron tulipifera*, tulip tree
20. *Phoenix canariensis*, phoenix palm

21. *Populus alba*, silver poplar
22. *Schinus terebinthifolius*, Brazilian pepper tree
23. *Cordyline australis*, New Zealand cabbage tree
24. *Quercus coccinea*, Turkey oak
25. *Archontophoenix cunninghamiana*, Bangalow palm
26. *Schlotheimia parvifolia*, Brazilian fern tree
27. *Parajubaea coccoloba*, mountain coconut
28. *Chamaerops humilis*, European fan palm
29. *Syagrus romanzoffiana*, queen palm
30. *Agathis robusta*, Queensland kauri
31. *Fagus sylvatica* 'Purpurea', copper beech
32. *Agathis australis*, kauri
33. *Salix babylonica*, Babylon weeping willow
34. *Salix matsudana* 'Tortuosa', corkscrew willow
35. *Sophora tetraptera*, kowhai
36. *Eucalyptus globulus* ssp. *bicolorata*, Southern blue gum
37. *Ligustrum lucidum*, privet
38. *Tecomanthe speciosa*, Three Kings climber
39. *Ginkgo biloba*, maidenhair tree
40. *Erythrina crista-galli*, coral tree
41. *Vitex lucens*, puriri
42. *Metrosideros excelsa*, pohutukawa
43. *Fraxinus oxycarpa* 'Raywoodii', claret ash
44. *Cotoneaster harrowianus*, cotoneaster
45. *Jacaranda mimosifolia*, jacaranda
46. *Prunus serrulata*, Japanese cherry
47. *Magnolia grandiflora*, magnolia
48. *Dacrydium cupressinum*, rimu
49. *Laurus nobilis*, bay laurel
50. *Corynocarpus laevigatus*, karaka
51. *Ilex aquifolium*, English holly
52. *Pinus radiata*, monterey pine
53. *Fraxinus excelsior* 'Aurea', golden ash
54. *Castanopsis cuspidata*, Japanese tan oak
55. *Platanus x acenifolia*, London plane
56. *Cinnamomum camphora*, camphor tree
57. *Quercus palustris*, pin oak
58. *Betula pendula*, silver birch
59. *Melia azedarach*, Indian bead tree
60. *Fraxinus oxycarpa* 'Raywoodii', claret ash

61. *Knightia excelsa*, rewareware
62. *Cordyline australis*, New Zealand cabbage tree
63. *Magnolia grandiflora*, laurel magnolia
64. *Acer palmatum*, Japanese maple
65. *Aesculus hippocastanum*, Horse chestnut
66. *Prunus avium*, cherry tree
67. *Arucaria columnaris*, Cook's pine
68. *Cinnamomum camphora*, Camphor tree





advance

Spring 2013

Research with impact

Protecting our urban forest

*Creating an arboretum at
Unitec's Mt Albert campus*



Unitec
UNIVERSITY OF TECHNOLOGY
CAMPUS

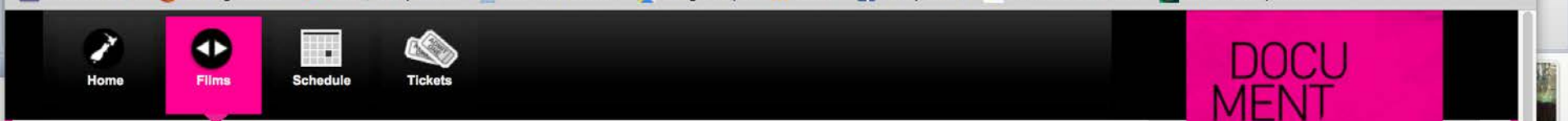
Recent development
plan for the next era of
landuse

The challenge



An aerial view of the Unitec site showing the proposed mix of educational, housing and commercial redevelopment.





Building One

WORLD PREMIERE

New Zealand 2014 / 28 mins

Director(s) Bertie Plaatsman

The story of an Auckland landmark, Unitec's Building One, from lunatic asylum to technology institute through the eyes of its inhabitants.

Share this



Find similar films by topic: [Health](#), [History](#)

DOCUMENTARY
edge
FESTIVAL

liferescripted

Auckland

SAT 23 MAY

11:00 AM Q Theatre

Book

TUE 26 MAY

2:15 PM Q Theatre

Book

Tasks	Sandra Potier	Bertie Plaatsman
Notes	Invitation to delegate training-... 1:24 PM	021-140 1338
	Sid Suha Aksoy	

20734 items 6099 unread

All folders are up to date. Connected to "Unitec"







MT ALBERT CAMPUS MAP

