

**Volume 69 (2)**  
**December 2014**

**ISSN 0113-4132**

**Auckland  
Botanical  
Society**



**Journal**

**Table 1. List of specimens that can be found at the Auckland Botanic Garden, together with their voucher numbers at Auckland Museum (AK) and Allan (Lincoln) (CHR) herbaria.**

Species	AK Herbarium	CHR Herbarium	Collected origin
<i>Podocarpus longefoliolatus</i>	AK 355229	n/a	Unknown
<i>Podocarpus macrophyllus</i> var. <i>maki</i>	AK 355231	CHR 200125	Eastwoodhill, Ngatapa
<i>Podocarpus milanjanus</i>	AK 355228	CHR 200217	Unknown, but a specimen is held at Kew Herbarium (1915-28101)
<i>Podocarpus neritifolius</i>	AK 355230	CHR 102530, CHR 102526 C	Mt Giluwe, New Guinea

collections. There are only one or two of each species at ABG and it is possible that we have the last remaining plants in New Zealand, therefore conserving these plants is very important. We hold copies of many letters between A. Dakin and J. B. Hair discussing in depth this important conifer collection, which is available for anyone to read if they are interested.

#### Acknowledgements

Brian Molloy, Murray Dawson, and Sue Davison have helped us try to find more information about J. B. Hair. Ian Barton and Jack Hobbs have helped us piece together the movement of the plants once they'd arrived in Auckland. Ines Schonberger very helpfully and promptly organised the data entry of the herbarium specimens at CHR to enable us to find the wild origin of Hair's podocarps.

#### References

- Frankel, O.H.; Hair, J.B. 1937: Studies on the cytology, genetics and taxonomy of N.Z. *Hebe* and *Veronica* (Part 1). *New Zealand Journal of Science Technology* 18: 669-687.
- Frankel, O.H.; Hair, J.B. 1938: Analytical yield investigations on N.Z. wheat. III. Nine years' observations on two varieties. *New Zealand Journal of Science & Technology* 20A: 224-259.
- Hair, J.B. 1966: Biosystematics of the New Zealand flora, 1945-1964. *New Zealand Journal of Botany* 4: 559-595.
- Hair, J.B.; Beuzenberg, E.J. 1958: Chromosomal evolution in the Podocarpaceae. *Nature* 181(4623): 1584-1586.
- Hair, J.B.; Beuzenberg, E.J. 1961: High polyploidy in New Zealand *Poa*. *Nature*, 189, 160.
- Godley, E. 1999 Otto Herzberg Frankel. The Royal Society of New Zealand. 2012: Thomson, A.D. 1979: John Bruce Hair. *New Zealand Genetical Society Newsletter* 5: 7-9.

## The epiphytic water world of *Collospermum hastatum* (Colenso) Skottsb.

Sarah A. Killick, Dan J. Blanchon, and Mark F. Large

#### Introduction

Epiphytic plants are often adapted to hold water, either in leaf axils, or in some sort of central cup (Richardson 1999). These bodies of water (called phytotelmata) (Fig. 1) frequently provide habitats for communities of aquatic microorganisms. Bromeliads, commonly grown as house and garden plants in New Zealand, are the most frequently studied group of phytotelmic plants (Frank & Lounibos 2009; Jocque et al. 2010; Brouard et al. 2011; Panizzo 2011).

Many gardeners will know that bromeliads provide a habitat for mosquitos, so it is not surprising to

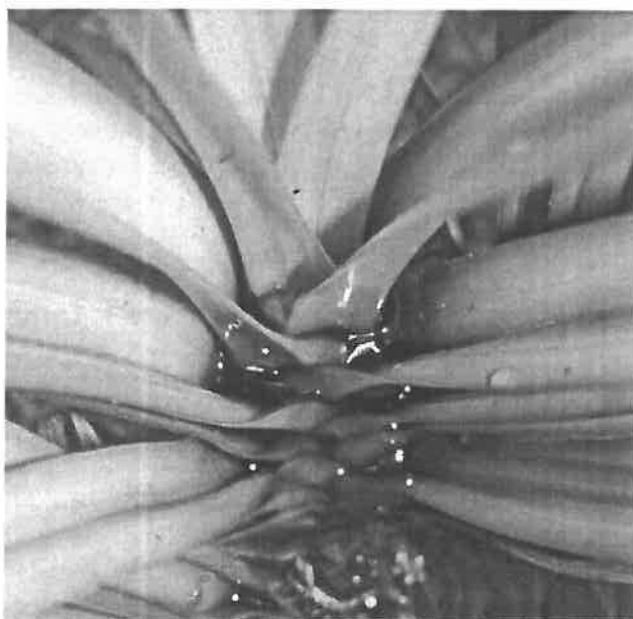
discover that a wide diversity of macro-invertebrates have been recorded from plants in a natural habitat. These include members of the Turbellaria, Rotifera, Nematoda, Annelida, Crustacea, Odonata, Hemiptera, Orthoptera, Diptera, Coleoptera, Hymenoptera, Hemiptera, Lepidoptera, Dermaptera, Blattodea, Isoptera (Frank & Lounibos 2009; Torreias & Ferreira-Keppler 2011) and Arachnida (Mogi 2004). These macro-invertebrates support amphibians in both mature and immature life stages (Wittman 2000). The high level of invertebrate diversity is, in turn, partly dependent upon algae as a source of nutrition (Brouard et al. 2011).



**Fig. 1.** Close up view of *Neoregelia* sp., showing the leaf rosette and phytotelmic water reservoir. Here grown under native forest at Waiatarua, Auckland, N.Z. Photo: Mark Large, 5 Aug 2014.



**Fig. 2.** The New Zealand native epiphyte *Collospermum hastatum*. Waiatarua, Auckland. Photo: Mark Large, 5 Aug 2014.



**Fig. 3.** Close up view of the epiphytic *Collospermum hastatum*, showing the water-retaining leaves of the rosette. Waiatarua, Auckland. Photo: Mark Large, 5 Aug 2014.

Various micro-algae have been reported including yellow-green Xanthophyceae, diatoms (Bacillariophyceae), green algae (Chlorophyceae), Ulvophyceae, and desmids (Zygnematophyceae). The latter appear to be particularly common, representing 58% of algae taxa reported (Sophia et al. 2004).

A range of New Zealand native plants are known to hold water (Derraik 2005b), including the predominantly epiphytic *Collospermum hastatum* (appropriately called 'tank lily') (Figs. 2, 3). Although *Collospermum* has been studied for mosquito larvae (Derraik 2009a; 2009b, Derraik & Heath 2005), we have been unable to find any assessment of other biota. Consequently in 2013 we undertook a preliminary survey of water from this species. We sampled water from plants growing across the Auckland region: from Clevedon in the south, Kaipara and Waitakere in the west, and Great Barrier Island in the Hauraki Gulf. Each sample was examined under a light microscope, tested for water pH and used for a DNA analysis.

#### Observations

Although no algal material was visible in the water samples from *Collospermum hastatum*, the presence of fungi, cyanobacteria, ciliates and biological detritus such as fern spores (Fig. 4), pollen grains (Fig. 5) and trichomes were noted visually. In contrast, preliminary results for the DNA assay suggest the presence of a wide range of microorganisms and bacteria, including members of the: Proteobacteria; Opisthokonta; Cyanobacteria and Euglenozoa.

All *Collospermum hastatum* water was observed to be acidic, at pH 4.26 – 6.00, despite local rainwater measuring a less acidic pH 6.2. This may, in part, be caused by decaying plant material caught within the leaf bases.

In contrast to *Collospermum*, bromeliad samples from plants grown in urban or higher light environments contained desmids and diatoms including: *Pinnularia* (Fig. 6), *Navicula*, *Eunotia* (Fig. 6) and *Cymbella*. The colonial alga *Dictyosphaerium* (Fig. 7) was also present, as were cyanobacteria *Croococcus* sp. (Fig. 6). Interestingly, bromeliads cultivated in New Zealand forested environments lacked diatoms and desmids and this may be associated with the lower light levels in that habitat. A Brazilian study of bromeliads found that those in shaded environments had an abundance of aquatic fungi, but rarely any algae (Sophia et al. 2004).

Given that many micro-organisms are not easily identified by traditional methods, we are continuing this investigation using high-throughput DNA

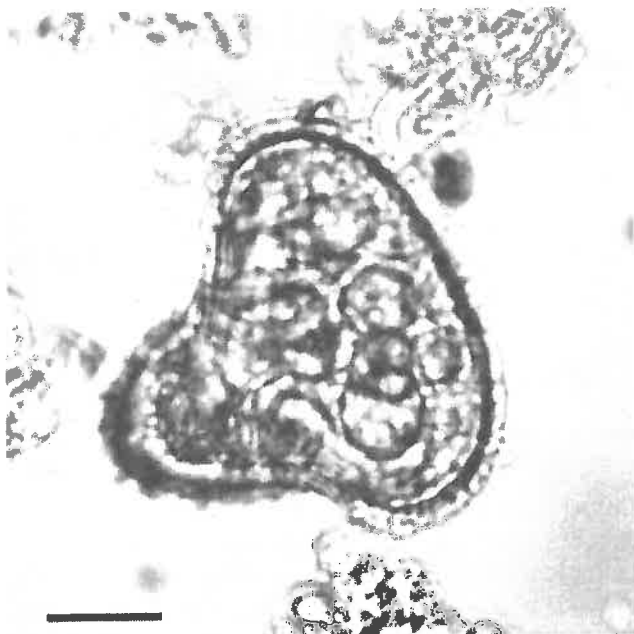


Fig. 4. Fern spore of *Cyathea medullaris* in water sample from *Collospermum hastatum*. Scale 10  $\mu\text{m}$ . Photo: Sarah Killick.

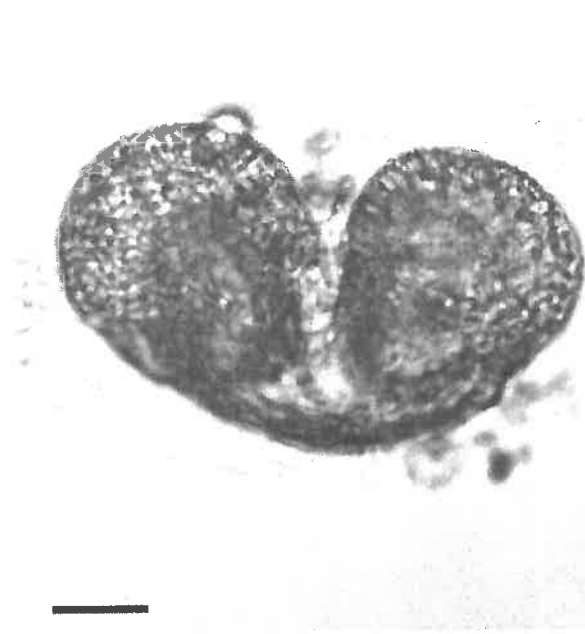


Fig. 5. Saccate podocarp pollen grain (possibly *Podocarpus*) in water sample from *Collospermum hastatum*. Scale 10  $\mu\text{m}$ . Photo: Sarah Killick.

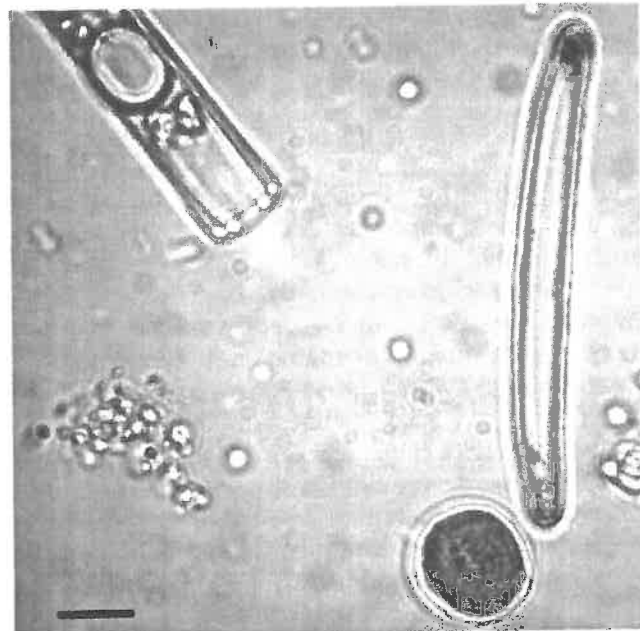


Fig. 6. *Croococcus* sp., *Pinnularia* sp. and *Eunotia* sp. in water sample from the Bromeliad genus *Aechmea* sp. Scale 10  $\mu\text{m}$ . Photo: Sarah Killick.

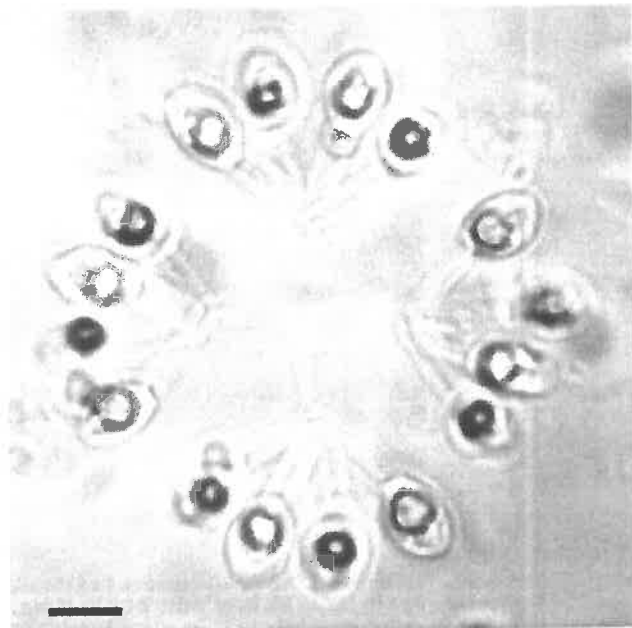


Fig. 7. *Dictyosphaerium* sp. in water sample from the Bromeliad genus *Aechmea* sp. Scale 10  $\mu\text{m}$ . Photo: Sarah Killick.

sequencing. We also hope to assess why micro-algae are absent from our sampling. We are interested in sampling water from more bromeliads ideally grown under forest cover. Of particular interest is *Alcantarea*.

#### References

- Brouard, O.; Jeune, A.-H.L.; Leroy, C.; Cereghino, R.; Roux, O.; Pelozoelo, L.; Carrias, J.-F. 2011: Are algae relevant to the detritus-based food web in tank-bromeliads? *Plos ONE* 6: doi: 10.1371/journal.pone.0020129
- Derraik, J. 2005a: Immature Diptera (excluding Culicidae) inhabiting phytotelmata in the Auckland and Wellington regions. *New Zealand Journal of Marine and Freshwater Research* 39: 981-987.
- Derraik, J. 2005b: Mosquitoes breeding in phytotelmata in native forests in the Wellington region, New Zealand. *New Zealand Journal of Ecology* 29: 185-191.

#### Acknowledgements

We wish to thank Professor Peter Lockhart for his assistance and ongoing collaboration with regard to DNA analysis.

- Derraik, J. 2009a: Association between habitat size, brushtail possum density, and the mosquito fauna of native forests in the Auckland region, New Zealand. *EcoHealth* 5: 229-238.
- Derraik, J. 2009b: The mosquito fauna of phytotelmata in native forest habitats in the Auckland region of New Zealand. *Journal of Vector Ecology* 34: 157-159.
- Derraik J.G.; Heath A.C. 2005: Immature Diptera (excluding Culicidae) inhabiting phytotelmata in the Auckland and Wellington regions. *New Zealand Journal of Marine and Freshwater Research* 39: 981-987.
- Frank, J.H.; Lounibos, L.P. 2009: Insects and allies associated with bromeliads: a review. *Terrestrial Arthropod Review* 1: 125-153.
- Jocque, M.; Kernahan, A.; Nobes, A.; Williams, C.; Field, R. 2010: How effective are non-destructive sampling methods to assess aquatic invertebrate diversity in bromeliads? *Hydrobiologia* 649: 293-300.
- Mogi, M. 2004: Phytotelmata: hidden freshwater habitats supporting unique faunas. In C. M. Yule & H. S. Yong (Eds.), *Freshwater Invertebrates of the Malaysian Region* (pp. 13). Malaysia: Academy of Sciences.
- Panizzo, J. 2011: Physical factors influencing macro-invertebrate assemblages in epiphytic bromeliads in the rainforest of Belize. Oslo: Norwegian University of Life Sciences.
- Richardson B.A. 1999: The bromeliad microcosm and the assessment of faunal diversity in a neotropical forest. *Biotropica* 31: 321-336.
- Sophia M.G.; Carmo B.P.; Huszar V.L. 2004: Desmids of phytotelm terrestrial bromeliads from the National Park of "Restinga de Jurubatiba", Southeast Brasil. *Algological Studies* 1141: 99-119.
- Torreias, S.R.d.S.; Ferreira-Keppler, R.L. 2011: Macroinvertebrates inhabiting the tank leaf terrestrial and epiphyte bromeliads at Reserva Adolpho Ducke, Manaus, Amazonas. *Brazilian Archives of Biology and Technology* 54: 1193-1202.
- Wittman, P.K. 2000: The animal community associated with canopy bromeliads of the lowland Peruvian Amazon rain forest. *Selbyana* 21: 48-51.

## The amazing beach foam of Puaotetai Bay, south Piha

Mike Wilcox



Fig. 1. Puaotetai, 'foam bay', at low tide, south Piha. Photo: Mike Wilcox, 20 Sep 2014.



Fig. 2. The Gap, south Piha. Photo: Mike Wilcox, 20 Sep 2014.

During the Bot Soc trip to Piha (Fig. 1) on 20 September 2014 we were much impressed by the abundant white foam washing through The Gap (Fig. 2) and the Taitomo Island "Keyhole" tunnel into Puaotetai Bay. The name Puaotetai actually refers to "the foam that piles up in the bay during stormy weather". According to Wikipedia, sea foam, ocean foam, beach foam, or spume is a type of foam created by the agitation of seawater, particularly when it contains higher concentrations of dissolved organic matter (including proteins, lignins, and lipids) derived from sources such as the breakdown of algal blooms. These compounds can act as surfactants or foaming agents. As the seawater is churned by breaking waves in the surf zone adjacent to the shore, the presence of these surfactants under these turbulent conditions traps air, forming persistent bubbles that stick to each other through surface tension. In this way, foam forms when dissolved organic matter in the sea is churned up. Sea foam results mainly from the enrichment of surface-active substances exuded by (i) phytoplankton blooms, (ii) seaweed or (iii) even terrestrial plants (Schilling & Zessner 2011). The enriched material is whisked into foam by the action of waves and washed ashore (Fig. 3).

When large blooms of algae decay offshore, great amounts of decaying algal matter often wash ashore and algal blooms are one common source of thick sea foams. Vivienne Cassie Cooper (1996) indicates that the main algae involved in our surf beach foam are the centric diatoms *Attheya armatus*, *Asterionellopsis glacialis* and *Aulacodiscus*