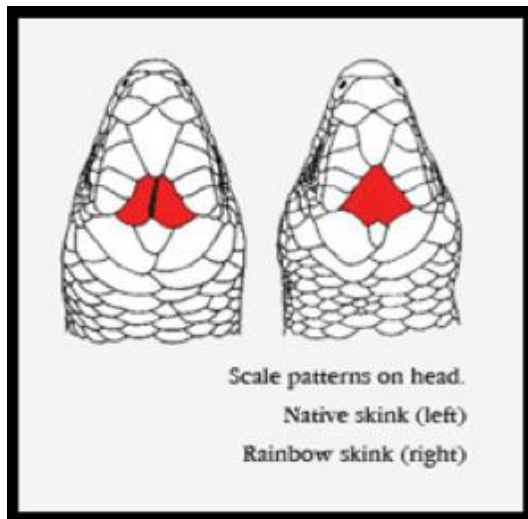


Detecting the spread of a known rainbow skink (*Lampropholis delicata*) population over an island

Sarah Killick, Mel Galbraith, Diane Fraser,
Nick Waipara, Jeff Cook, Jacqui Wairepo



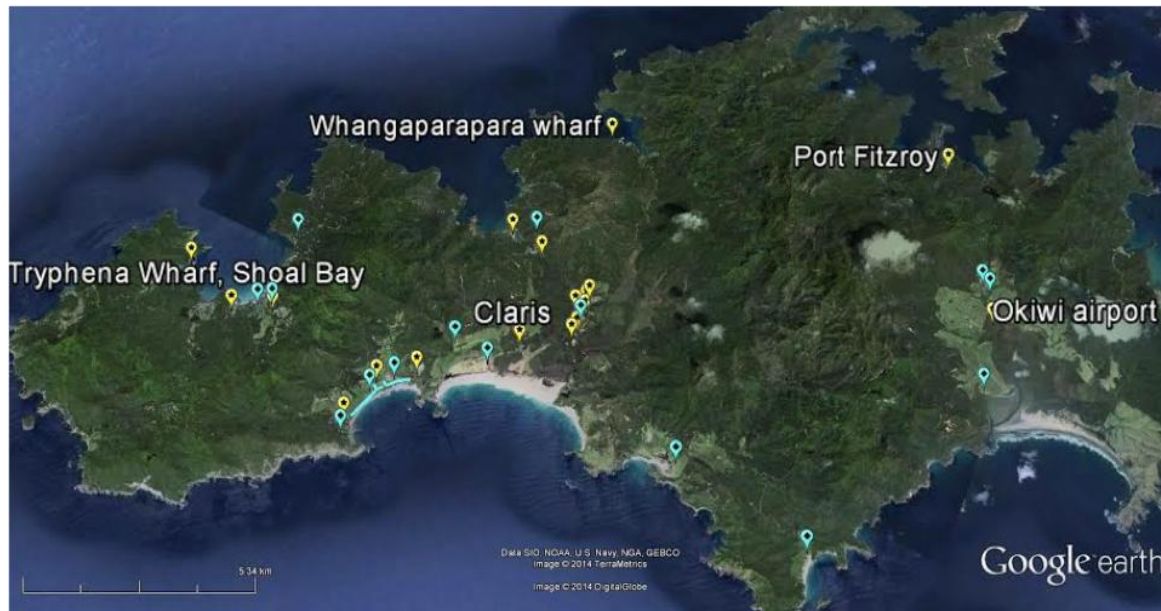


***L. delicata* characteristics**

- R-strategist
- Lays eggs in communal clutches
- Habitat and diet generalist

Tryphena, Great Barrier Island

- Diverse range of native lizards
- Mixed vegetation
- Residential area
- Incoming passengers and cargo



Mixed-method approach

- Manual visual searches
- Artificial Cover Objects (ACOs)
- Tracking tunnels
- Community involvement

Results

- Rainbow skinks were detected inside and outside initial delimitation line
- Delimitation line was moved
- No rainbow skinks detected at high-risk vector sites



Acknowledgements

Firstly, I would like to thank Jacqui Wairepo for including me in this project and for all of the on-field support. I thank Unitec for encouraging active practice alongside theory.

A special thanks to Nick Waipara, Jeff Cook, and the rest of the Auckland Council and Treasure Islands project for awarding me this summer studentship experience.

References

¹Chapple, D. G., Whitaker, A. H., Chapple, S. N., Miller, K. A., & Thompson, M. B. (2013). Biosecurity interceptions of an invasive lizard: origin of stowaways and human-assisted spread within New Zealand. *Evolutionary Applications*, 6(2), 324-329. doi:10.1111/eva.12002

²Peace, J. E. (2004). Distribution, habitat use, breeding and behavioural ecology of rainbow skinks (*Lampropholis delicata*) in New Zealand. Retrieved from The University of Auckland website: http://www.massey.ac.nz/~mbaling/Peace/Peace_MSCThesis.pdf